

Revo Uninstaller user's manual

1. Overview
2. User Interface
3. Uninstaller
 - 3.1. All Programs
 - 3.2. Traced Programs
 - 3.2.1. Uninstall
 - 3.2.2. Custom Uninstall
 - 3.2.3. Advanced Uninstall
 - 3.3. Forced Uninstall
 - 3.4. Install Programs
 - 3.5. Hunter Mode
4. Backup Manager
5. Tools
 - 5.1. AutoRun Manager
 - 5.2. Junk Files Cleaner
 - 5.3. Windows Tools
 - 5.4. Browsers Cleaner
 - 5.5. Microsoft Office Cleaner
 - 5.6. Windows Cleaner
 - 5.7. Evidence Remover
 - 5.8. Unrecoverable Delete
6. Options
 - 6.1. General
 - 6.2. Uninstaller
 - 6.2.1. All Programs
 - 6.2.2. Traced Programs
 - 6.3. Junk Files Cleaner
 - 6.4. View
7. Registration and Activation
8. Command Line Support
9. Restore Full Registry Backup

1. Overview

Revo Uninstaller Pro helps you to uninstall software and remove unwanted programs installed on your computer even if you have problems uninstalling and cannot uninstall them from "Windows Add or Remove Programs" control panel applet.

Revo Uninstaller Pro is a much faster and more powerful alternative to "Windows Add or Remove Programs" applet!

With its advanced and fast algorithm, Revo Uninstaller Pro analyzes an application's data before uninstall and scans after you uninstall an application. After the program's regular uninstaller runs, you can remove additional unnecessary files, folders and registry keys that are usually left over on your computer. Even if you have a broken installation, Revo Uninstaller Pro scans for an application's data on your hard disk drives and in the Windows registry and shows all found files, folders and registry keys so you can delete them.

There are tens of thousands of applications that leave a lot of unused data such as registry entries, files and folders in your computer. Not all registry keys left in your computer are errors, and the third party registry cleaners cannot detect them. Leftover registry keys in combination with leftover files make the registry cleaner's job impossible. Revo Uninstaller Pro helps you to remove the leftover registry keys, files and folders after uninstalling an application.

With its unique "Hunter mode", Revo Uninstaller Pro offers you some simple, easy to use, but effective and powerful methods for uninstalling software. You can use it to manage your installed and/or running software programs.

Revo Uninstaller Pro has a very powerful feature called Forced Uninstall. This feature allows you to remove leftovers of programs that are already uninstalled, incomplete installations and uninstallations of programs! It does not matter if the program, you want to remove, is not listed in Revo Uninstaller Pro or in Windows Add/Remove Programs Control Panel applet. Forced Uninstall gives the power to the user but still keeps the safety and the accuracy of the results.

Revo Uninstaller Pro has another feature that allows monitoring of installation of a program and detects system changes during that installation. The process is done in real time – simultaneously! This feature is also very powerful because by monitoring system changes during the installation we eliminate all the scanning algorithms when we need to uninstall that program.

Revo Uninstaller Pro has a multi level backup system. Backup Manager is the main part of that system. It helps you to manage backup information stored by Revo Uninstaller Pro after deletion registry entries, files and folders. The other levels of the backup system are

- Creating system restore point before each uninstall
- Full Registry backup before each uninstall
- Full Registry backup once each day Revo Uninstaller Pro is started

Revo Uninstaller Pro gives you another 8 handy and powerful tools to clean up your system.

Here is the list of the tools and utilities included in Revo Uninstaller Pro:

Auto Start Manager - Stop programs that start automatically on Windows startup; speed up loading of Windows!

Windows Tools Manager - Handy and useful tools bundled with every version of Windows; easily find useful system tools and options!

Junk Files Cleaner - Find and remove unnecessary files from your computer; free up disk space and delete files you do not need!

Browsers History Cleaner - Erase web browser history, visited pages history and temporary internet files of Internet Explorer, Netscape and Opera web browsers; free up a lot of disk space by deleting temporary internet files like temporary saved videos, temporary flash files, temporary pictures etc!

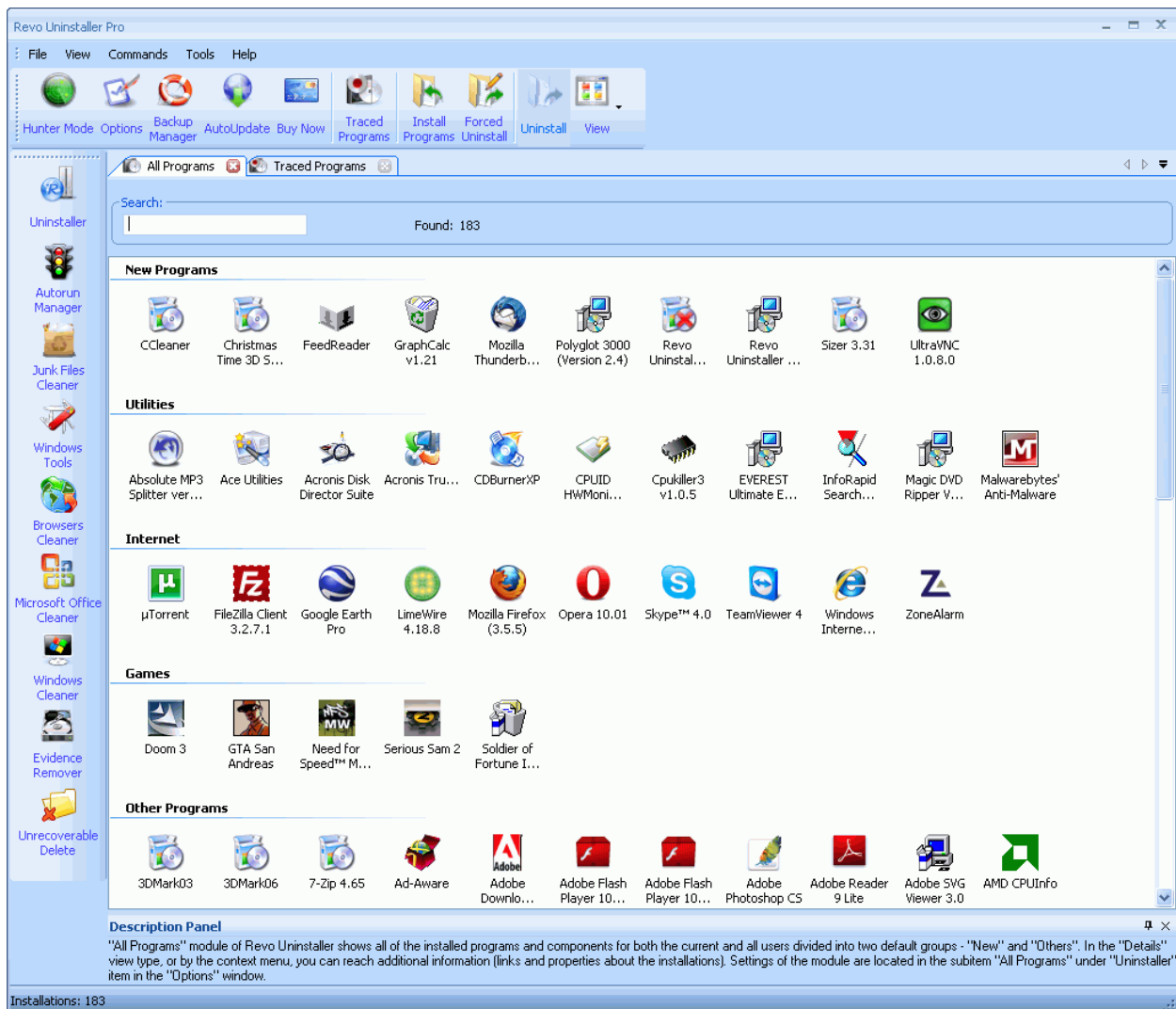
Office History Cleaner - Remove the history of most recently used files in MS Office; remove your tracks by deleting the list of last opened MS Office documents!

Windows History Cleaner - Remove the history of recently opened files, delete temporary files, remove usage tracks and other history items that are saved by Windows; remove your tracks saved by Windows for a lot of operations!

Unrecoverable Delete Tool - Erase files and folders forever; be sure that nobody could recover your files and folders after deleting!

Evidence Remover - Make sure already deleted files, folders and other data are unrecoverable; securely erase your data!

2. User Interface



Main window of Revo Uninstaller Pro is divided on few movable and flexible user interface components. By default on the top of the window is the “Menu Bar” it can be turned on/off from the “View” menu and it can be moved by dragging it, pressing the mouse button over a place different than a menu item.

Beneath the menu bar the main toolbar is located. It consists of some main features of Revo Uninstaller Pro and the available commands for the current active tool. Main toolbar can be turned on/off from the “View” menu and it can be moved by dragging it, pressing the mouse button over part of the toolbar different than a button. Description text could be turned on and off from the options. Also the size of the icons could be changed from the options.

On the left side of the main window is the “Tools” toolbar. It consists of the tools included in Revo Uninstaller Pro. The same rules valid for the Main Toolbar are valid here too.

On the bottom of the main window is the “Status Bar”. Depending on the active tool it can show some additional information. It can be turned on/off from the “View” menu.

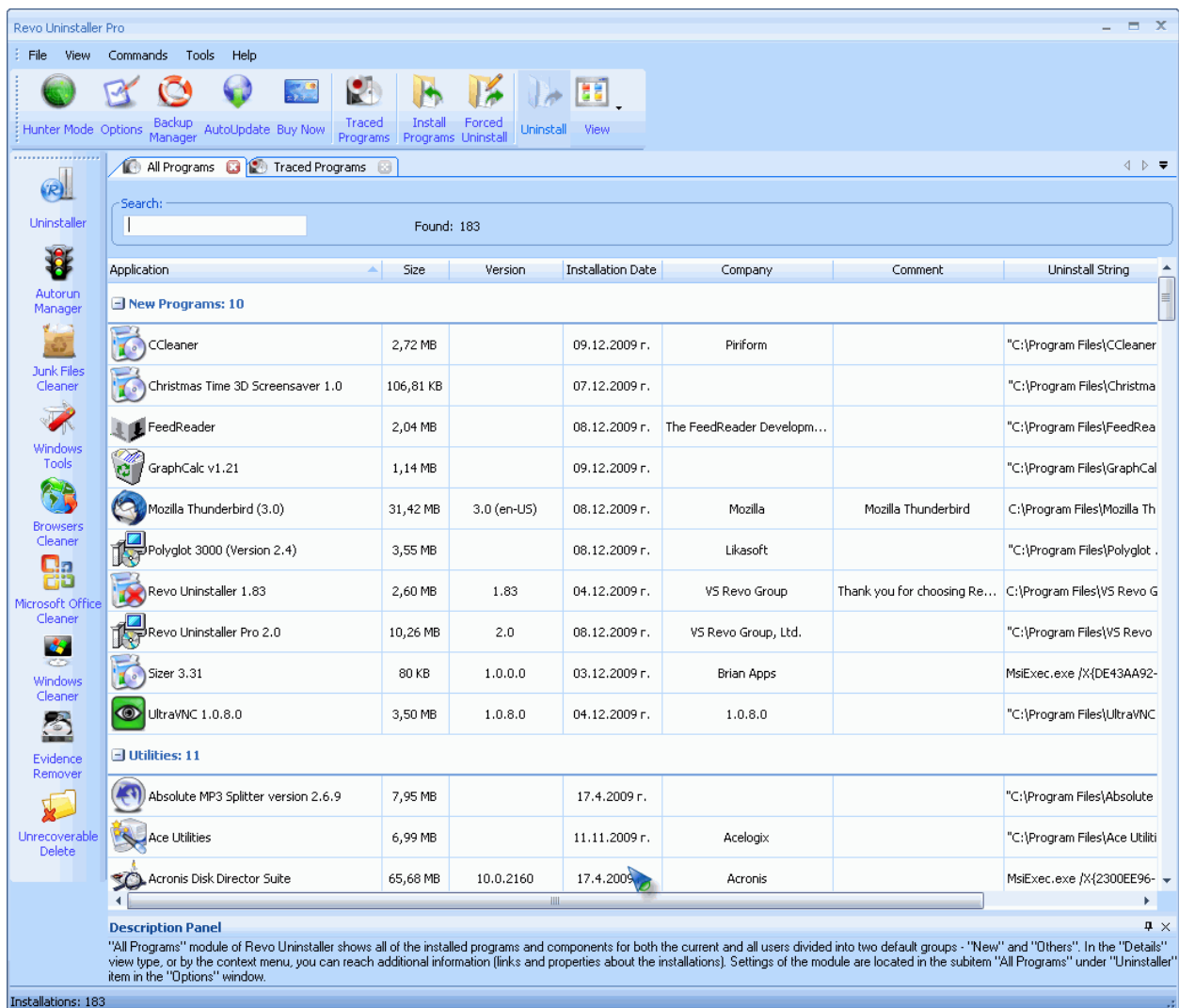
Above the “Status Bar” is the “Description Panel”. It shows some common information about the active tool. It can be turned on/off from the “View” menu and it can be moved by dragging it - pressing the mouse button anywhere in its window. Also the “Description Panel” supports an “auto hide” feature that hides the panel showing just one tight line with its title. When the mouse is over the title the panel is shown again, when the mouse is moved away it gets hidden again. To activate/deactivate the “auto hide” press the small button with the shape of a pin in the right upper part of the panel window.

In the middle part of the main window are shown opened tools. There could be a lot of opened tools at a time, but only one of them is active. To navigate among the tools just press their tab in the top part over the window of the active tool. You can also activate already opened tool by pressing its button on the Tools toolbar.

3. Uninstaller

3.1. All Programs

When Revo Uninstaller Pro is started, its main window fills with the programs installed on your computer. Depending on your options, other items such as system updates or system components may also be listed. Depending on the view option, programs are shown as **Icons**, **List**, and with **Details** such as **Name**, **Size**, **Version**, **Installation Date**, **Company**, **Comment**, **Uninstall String**, **Registry Key** and **Website**.



Revo Uninstaller Pro

File View Commands Tools Help

Hunter Mode Options Backup Manager AutoUpdate Buy Now Traced Programs Install Programs Forced Uninstall Uninstall View

All Programs Traced Programs

Search: Found: 183

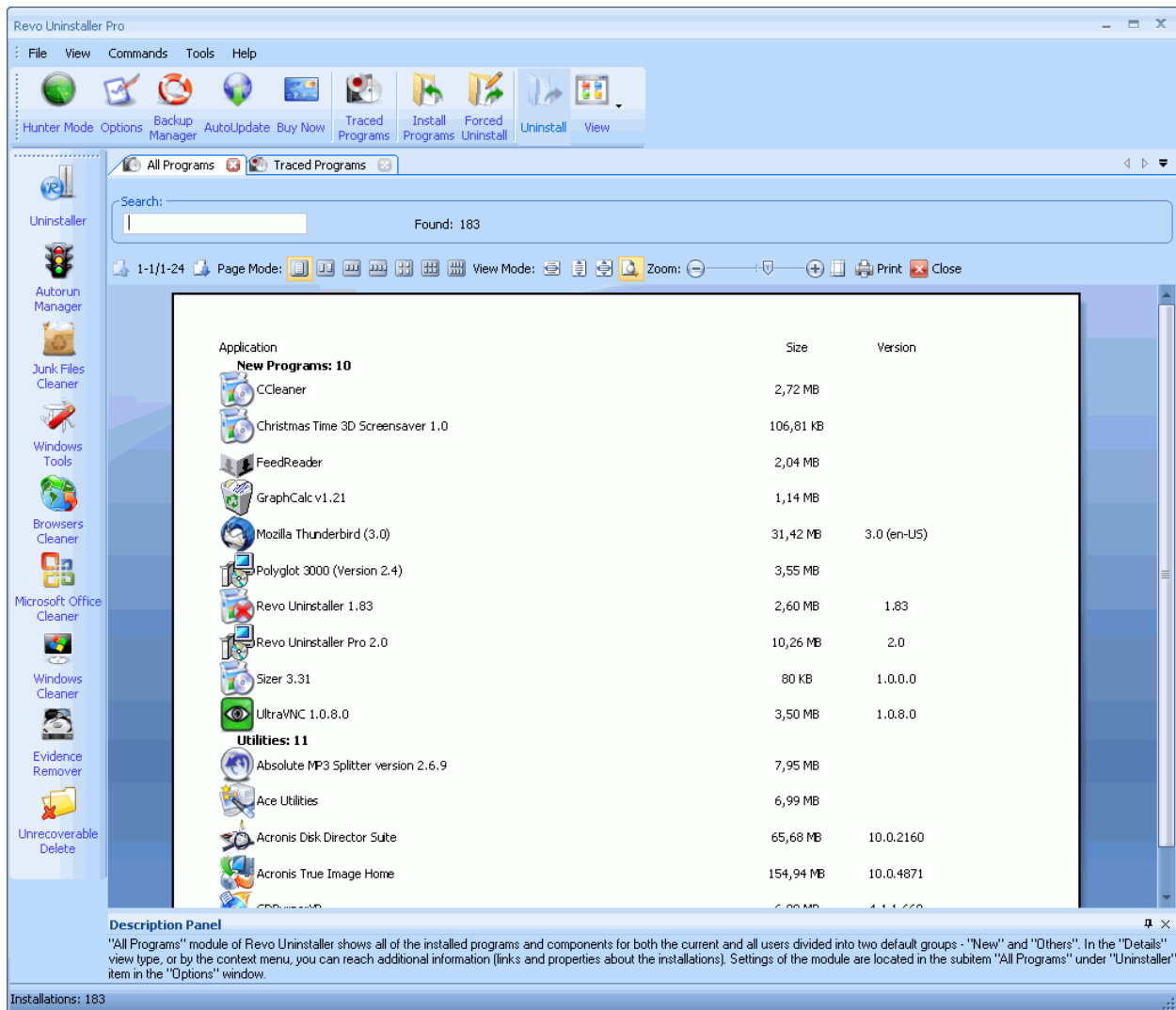
Application	Size	Version	Installation Date	Company	Comment	Uninstall String
New Programs: 10						
CCleaner	2,72 MB		09.12.2009 r.	Piriform		"C:\Program Files\CCleaner
Christmas Time 3D Screensaver 1.0	106,81 KB		07.12.2009 r.			"C:\Program Files\Christma
FeedReader	2,04 MB		08.12.2009 r.	The FeedReader Developm...		"C:\Program Files\FeeDRea
GraphCalc v1.21	1,14 MB		09.12.2009 r.			"C:\Program Files\GraphCal
Mozilla Thunderbird (3.0)	31,42 MB	3.0 (en-US)	08.12.2009 r.	Mozilla	Mozilla Thunderbird	C:\Program Files\Mozilla Th
Polyglot 3000 (Version 2.4)	3,55 MB		08.12.2009 r.	Likasoft		"C:\Program Files\Polyglot .
Revo Uninstaller 1.83	2,60 MB	1.83	04.12.2009 r.	V5 Revo Group	Thank you for choosing Re...	C:\Program Files\V5 Revo G
Revo Uninstaller Pro 2.0	10,26 MB	2.0	08.12.2009 r.	V5 Revo Group, Ltd.		"C:\Program Files\V5 Revo
Sizer 3.31	80 KB	1.0.0.0	03.12.2009 r.	Brian Apps		MsiExec.exe /X{DE43AA92-
UltraVNC 1.0.8.0	3,50 MB	1.0.8.0	04.12.2009 r.	1.0.8.0		"C:\Program Files\UltraVNC
Utilities: 11						
Absolute MP3 Splitter version 2.6.9	7,95 MB		17.4.2009 r.			"C:\Program Files\Absolute
Ace Utilities	6,99 MB		11.11.2009 r.	Acelogix		"C:\Program Files\Ace Utiliti
Acronis Disk Director Suite	65,68 MB	10.0.2160	17.4.2009 r.	Acronis		MsiExec.exe /X{2300EE96-

Description Panel

"All Programs" module of Revo Uninstaller shows all of the installed programs and components for both the current and all users divided into two default groups - "New" and "Others". In the "Details" view type, or by the context menu, you can reach additional information (links and properties about the installations). Settings of the module are located in the subitem "All Programs" under "Uninstaller" item in the "Options" window.

Installations: 183

In **Details** view you can right-mouse click on the column header and show or hide some of the columns. This way you can also choose what to print. Printing works only in **Details** view and that is why it is better to setup printing as Landscape view – to see much more info in one page.



By default Revo Uninstaller Pro shows you programs in Icons view in two groups:

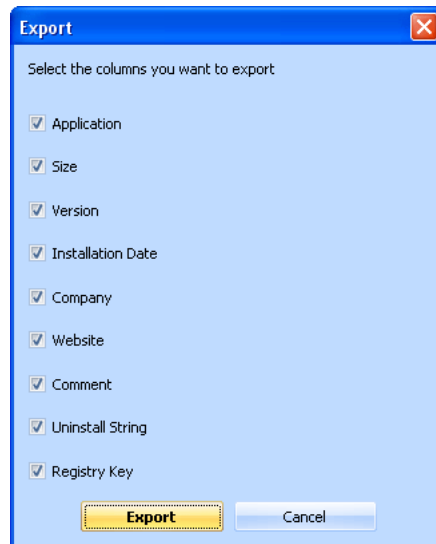
New programs – programs installed last 7 days – number of the days could be changed from the options, or since last run of the uninstaller;

Other Programs – all programs that are installed before last 7 days;

You can separate each program in a group by using the context menu, shown on right-mouse click on a program. Removing a program from a group is also done from the context menu. Default groups are **Internet**, **Games**, **Multimedia** and **Utilities**. Additional groups can be added from the options.

Using the Search field in the upper part of the main window you can filter the list of the programs by name. On the right of the “**Search**” field is the number of found programs that match the search criteria.

Revo Uninstaller Pro has an option to export installed programs to **HTML**, **TXT** and **XLS** (Excel table). Note that to export installed programs to an Excel you have to have Microsoft Excel installed and working properly. You can choose which details you can export.



Some other commands are available from the context menu:

Search at Google for – Use it to search with Google for the application name or the producer or source of the application. This command will open your default web browser and display the results of the search.

Open About Link – This command will open your default web browser and display the address containing information about the application.

Open Help Link – This command will open your default web browser and display the address containing help information.

Open Update Link – This command will open your default web browser and display the address providing update information.

Install Location – Opens Windows Explorer so you can see where the selected application is installed.

Open Registry Key – Opens the registry editor (RegEdit.exe) and displays the registry key containing the uninstall information about the selected application.

The main command you can use on the list of installed programs is **Uninstall!** Selecting a program and pressing **Uninstall** toolbar button will show up the Uninstall Wizard.

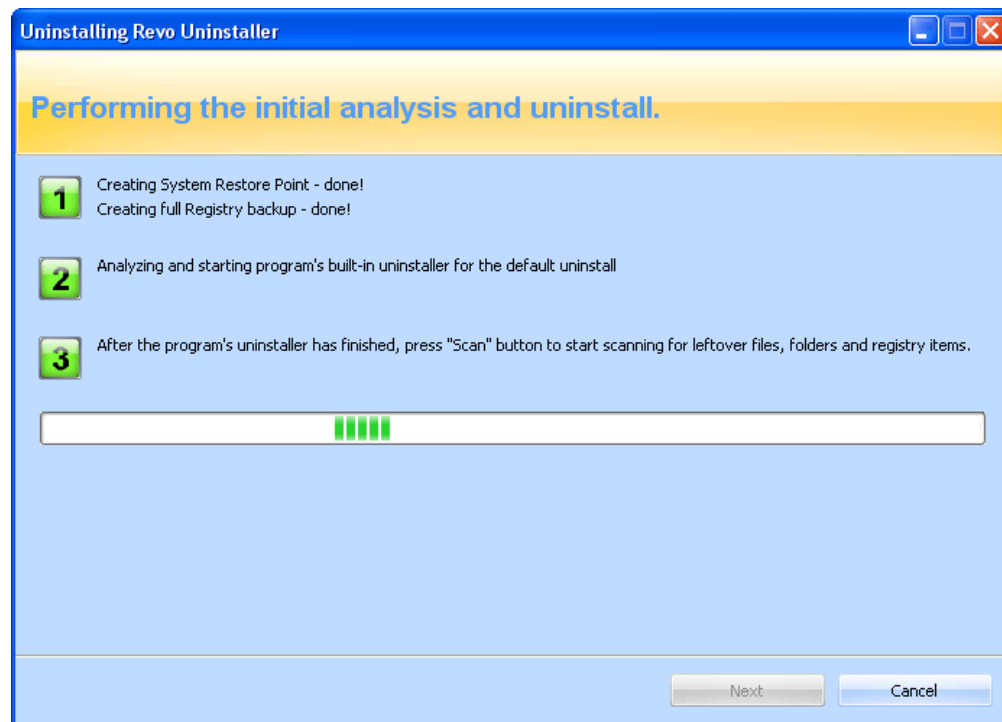
First Revo Uninstaller Pro will create a system restore point and a full registry backup (if this is not disabled in Options) and then Revo Uninstaller Pro will run the built-in uninstaller of the uninstalled program. After you have finished uninstallation with it, you have to press **Scan** button to continue the uninstall process with Revo Uninstaller Pro. Note that the built-in uninstaller may show up behind other open windows and you may need to switch between windows by using **Alt+Tab** keyboard keys – press and hold **Alt** key and then press **Tab**.

You can choose scanning mode before scan:

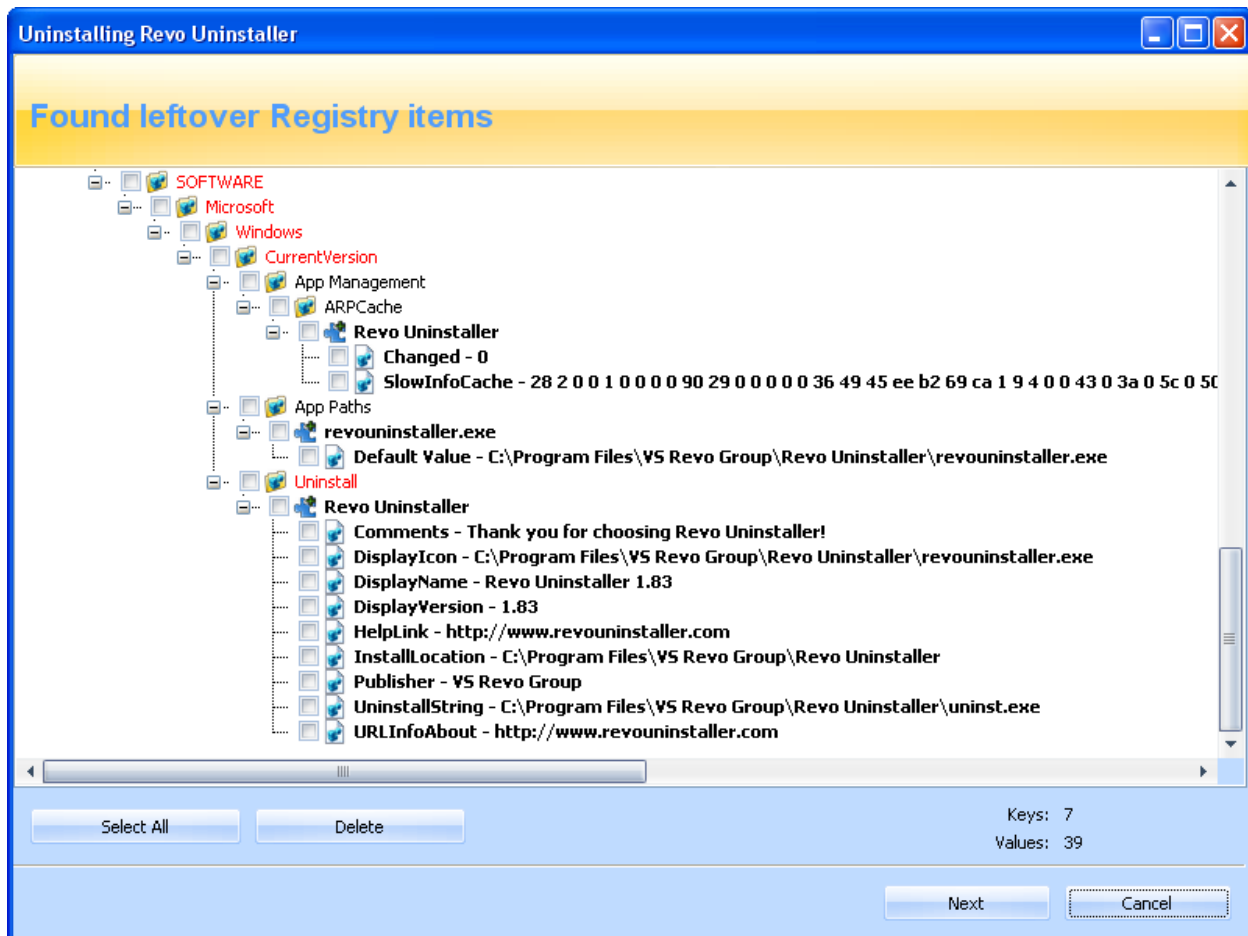
Safe - performs additional scans in the Registry and on the hard drive to find leftover items that are safe to delete. This is the fastest mode.

Moderate - includes the Safe mode and performs an extended scan to find all of the application's leftover information in the most common places of the Registry and on the hard drive

Advanced - includes the Moderate mode and performs a deep and thorough scan to find all of the application's leftover information in the Registry and on the hard drive. This is the slowest mode.



Pressing **Scan** button will trigger scanning for leftovers and the results (if any) will show up automatically. Revo Uninstaller Pro first shows you found leftover registry items. Registry keys and values found as created by the uninstalled program are **bold**! Not bold keys are considered as not created by the uninstalled program. You can also check mark them but they will not be deleted! They have check mark options just because it is easier to select the top parent and automatically its sub items are check marked – no need to go through all sub items and check mark them separately. So, whatever you check mark, when you press **Delete** button check marked bold items only are going to be deleted, even when **Select All** button is used.



Deleted registry items are backed up, so if you need them you can restore them from Backup Manager!

Revo Uninstaller has advanced algorithms to find leftovers related only to the uninstalled program. In some cases these algorithms, especially Advanced uninstall mode, could list some items related to another program. It could happen, but NOT necessarily (not always), when you have installed two or more versions of a program, for example Adobe Photoshop CS and Adobe Photoshop CS4. In this case Revo Uninstaller gives the chance to the user to distinguish the leftovers. It also could happen if you want to uninstall only a component of a big software package (i.e. a component of Microsoft Office). In that case Revo Uninstaller could list the rest of the components as leftovers, because they are installed in the same folder and Revo Uninstaller could not distinguish them (Excel, PowerPoint, Word etc). It is better Revo Uninstaller to be used to remove the whole package instead of a component. It also has safety algorithms and will NOT list some leftovers if it decides that deleting these leftovers will harm your system. So, it does a better job than Windows Add or Remove Programs applet and the built-in uninstaller of the application you want to uninstall, but still may miss something due to safety and the uninstall mode you choose - Advanced, Moderate, Safe.

In Revo Uninstaller Pro we have implemented a lot of protections to make it more safe and secure, trying to increase its accuracy in searching for leftovers to the maximum, but of course keeping the system and other programs safe.

Basically you can easily distinguish the leftovers (**by name, by install path**) and in most of the cases **Select All** button could be safely used! There are GUIDs and CLIDS (alphanumeric items) which are correct leftovers in 98% of the cases so you can delete them!

Note that Revo Uninstaller Pro creates full registry backup and backs up every item you delete!

There is also a context menu which you can see by right-mouse clicking on the leftover items.

Expand All – expands all items of the shown registry tree – by default it is expanded so you may not see any difference first time you use this command

Collapse All – collapses all items of the shown registry tree

Expand selected key – expands only the selected key and its sub items

Collapse selected key – collapses selected key and its sub items

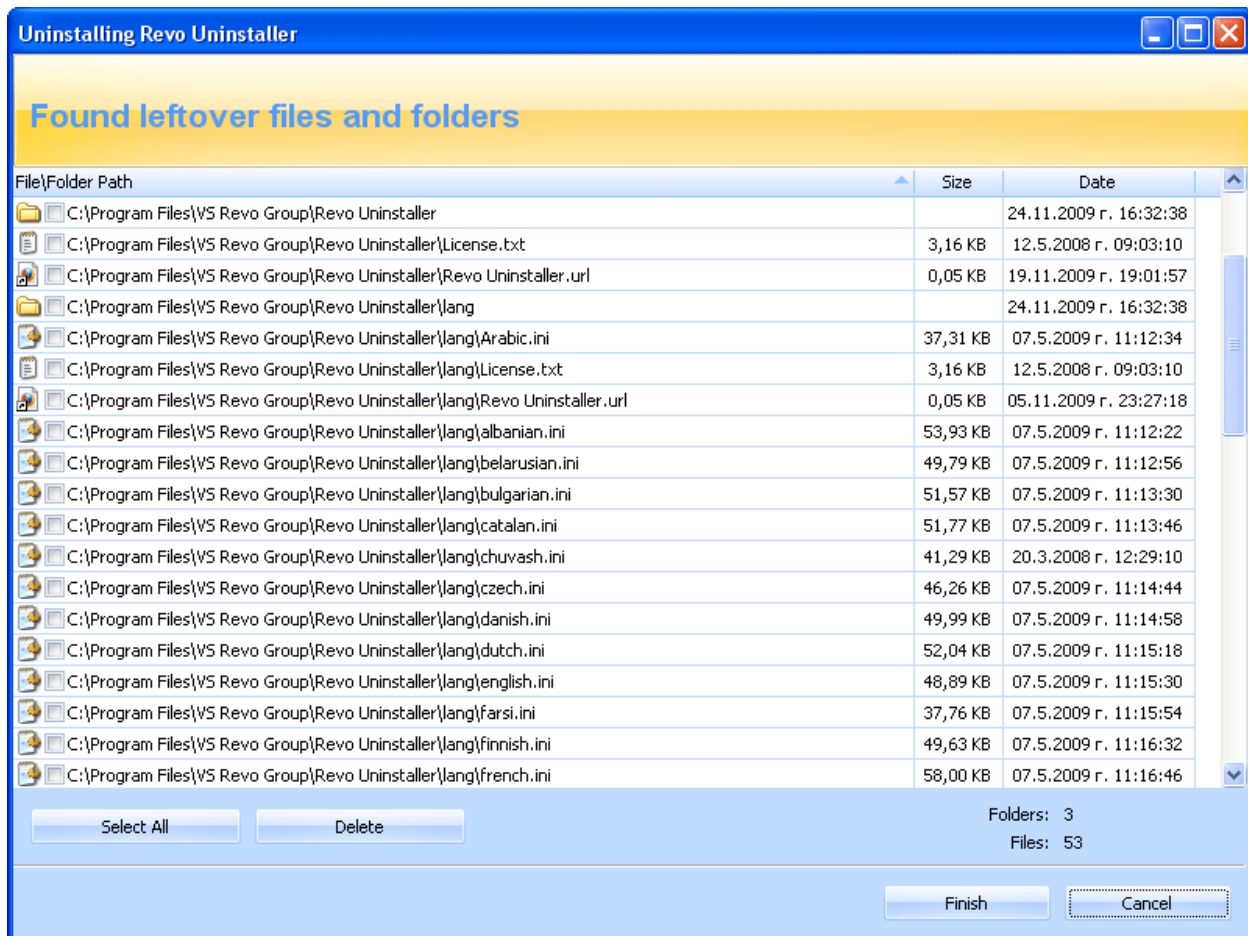
Uninstall selected key – deletes the key from the system

Mark selected key as Created – marks selected key as created by the program you are uninstalling. This feature is useful when you see a registry key which you are sure is created by the program, but not marked as created because of the safety algorithms in Revo Uninstaller Pro.

Add to Exclude List – adds the selected key to exclude lists, which protects the key from deletion. Excluded keys have **red** color and you can edit Exclude List in Revo Uninstaller Pro's options.

Open Registry Key... - open selected registry key in Windows Registry Editor (regedit)

After finishing registry leftovers removal you can press **Next** button and continue with the file and folder leftovers. Note that **Next** button may not be available if there are no other leftovers found!



Revo Uninstaller Pro shows you found leftover files and folder so you can check the results and delete them. Deleted files and folders are moved to the Recycle Bin by default, so you can recover them from there. You can change that from **Options -> All Programs**. You can also see how many leftover files and folders are found. There is a context menu, which you can use by right mouse-click on a file of folder.

Open – command on the context menu which acts the same way if you double click on a file or folder in Windows Explorer. Note that if there is no file association for the file you click on then nothing will happen.

Properties – command on the context menu, which acts the same way if you right-mouse click on a file and choose **Properties** – shows properties like file size, attributes, date of creation, modification etc.

You can use **Select All** button to select all found leftover files and folders at once and then use **Delete** button to delete them.

3.2. Traced Programs

Traced Programs module of the uninstaller shows all logs of installations traced using Revo Uninstaller Pro.

To trace a program with Revo Uninstaller Pro you can right-mouse click on its installation (setup) package file or press **Install Programs** button on the main toolbar.

Using the **Search** field in the upper part of the main window you can filter the logs by name. On the right of the **Search** field is the number of found logs that match the search criteria.

For every log there is information about the name, size of the traced program and date of creation of the log. All logs are grouped in two default groups – **New Programs** and **Other Programs**. Total number of logs is shown in the status bar.

Settings of the module are located in the sub item **Traced Programs** under **Uninstaller** item in the **Options** window.

Available commands to work with the logs are:

3.2.1. Uninstall

Uninstall of a logged program reverts all changes made to the system during the install of the program as they are logged by Revo Uninstaller Pro. This process involves changes to the Registry, file and folders.

After the command is executed, uninstall of Registry items, files and folders starts and you can see the progress of the process. The window closes automatically when it completes. By default all changed Registry items are backed up. If you want to back up the uninstall of files and folders then you have to set the option in “**Options->Uninstaller**”

3.2.2. Custom Uninstall

Custom uninstall of logged program let you to uninstall only a piece or the all changes made to the system during the install of the program. After the command is executed, you see the uninstall wizard with one or two steps depending on the items that the log consist of. If there are Registry items in the log you will see the first step of the wizard - tree with Registry items that you can uninstall. The window is separated on two parts – left one is the tree of Registry keys, on the right is the list of values. In the lower part of the window there are two counters that show the numbers of values and keys of the program that are logged.

When you click on a key in the tree if it has logged values they are shown in the list. The font property of items is used to give more information about the items. Such information is:

Bold item – logged by Revo Uninstaller Pro as created by the installed program
Red item – the item is excluded from the process of uninstall (the list of excluded items is shown in the “Options->Uninstaller->Traced Programs->Registry tab”)
Grayed item – the item does not exist in the system

You have to check mark items that you want to uninstall. If you want to uninstall all of them you can use the “Select All” button to check mark them all.

To start the uninstall operation press “Uninstall” button and you will see the progress of the operation.

There are some commands available from the context menu of the tree:

Expand All – expands the whole tree so the whole hierarchy of keys gets visible

Collapse All – collapses the whole tree making the only visible item – “My Computer”

Expand selected key – expands only the current key making all its sub items visible

Collapse selected key – collapses only the current key making its sub items invisible

Uninstall selected key – uninstalls selected key. The command is executed no matter if the key is check marked or not

Mark selected key as Created – marks the selected key as if it is created by the program so it will be removed during the process of uninstall.

Warning: Be very careful using this command! Mark the key only if you are sure that it belongs to the logged program but because by one reason or another is not logged by Revo Uninstaller Pro

Add to Exclude List – Adds the full path of the current Registry key to the exclude list thus protecting it from manipulations during the uninstall

Open Registry Key – Opens current key in the Windows Registry Editor

There are two commands available from the context menu of the list of values:

Uninstall selected values – uninstalls selected values. To select more than one value you can use left mouse button pressed and press **Ctrl** key from the keyboard to select random values or **Shift** key to select group of values

Open Parent Registry key – opens the key owner of selected value in the Windows Registry Editor

If there are files and folders in the log you can press the **Next** button of the wizard and you will see the list of logged files and folders. In the lower part of the window there are two counters that show the numbers of files and folders of the program that are logged by Revo Uninstaller Pro. Also there is an option to rename the items that had been existed before the install of the program and during the install it has renamed them. This option is: **Execute Rename operations of previously existing on the system files and folders.**

If you want to uninstall some files and folders you have to check mark some existing file or folders or use “**Select All**” button to check all existing items and then uninstall them pressing “**Uninstall**” button

There are two commands available from the context menu of the list of file and folders:

Open – command on the context menu which acts the same way if you double click on a file or folder in Windows Explorer. Note that if there is no file association for the file you click on then nothing will happen.

Properties – command on the context menu, which acts the same way if you right-mouse click on a file and choose **Properties** – shows properties like file size, attributes, date of creation, modification etc.

Other commands to work with the logs are:

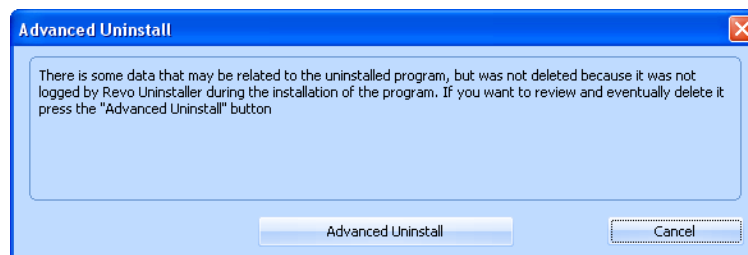
Delete Log - deletes the log from the list and all data in the log, but the logged program is untouched

Change Icon - change the icon of the log, browsing for an icon from dll or exe file

Add to Group - add selected log(s) to a existing group (you can manage groups from Options->Uninstaller->Groups tab)

Remove from Group - removes selected log(s) from its current group.

3.2.3. Advanced Uninstall



While the uninstall of a log is proceeding Revo Uninstaller Pro may recognize that there is some data that may be related to the uninstalled program, but was not deleted because it was not logged by Revo Uninstaller Pro during the installation of the program. In such case you will see a window with **Advanced Uninstall** button. The **Advanced Uninstall** feature let you to review and delete such program’s data that Revo Uninstaller Pro thinks to be related to the program you are trying to uninstall. If you want to review and eventually delete it press the "Advanced Uninstall" button. That action will start the Advanced Uninstall wizard, which may consist of two steps. First one shows possibly related to the uninstalled program, keys and values existing in the Registry and the second one possible related files and folders on your hard drive(s).

Warning: before deleting data using “Advanced Uninstall” feature, be sure that it is related to the uninstalled program or it is created by that program

If there are possibly related to the uninstalled program Registry items you will see the first step of the wizard - tree with Registry items that you can uninstall. When you click on a key in the tree if it has values they are shown in the list. The font property of items is used to give more information about the items. Such information is:

Bold item – treated by Revo Uninstaller Pro as related to the uninstalled program

Red item – the item is excluded from the process of uninstall (the list of excluded items is shown in the “Options->Uninstaller->Traced Programs->Registry tab”)

You have to check mark items that you want to uninstall. If you want to uninstall all of them you can use the “Select All” button to check mark them all.

To start the uninstall operation press “Uninstall” button and you will see the progress of the operation.

There are some commands available from the context menu of the tree:

Expand All – expands the whole tree so the whole hierarchy of keys gets visible

Collapse All – collapses the whole tree making the only visible item – “My Computer”

Expand selected key – expands only the current key making all its sub items visible

Collapse selected key – collapses only the current key making its sub items invisible

Uninstall selected key – uninstalls selected key. The command is executed no matter if the key is check marked or not

Mark selected key as Created – marks the selected key as if it is created by the program so it will be removed during the process of uninstall.

Warning: Be very careful using this command! Mark the key only if you are sure that it belongs to the logged program but because by one reason or another is not logged by Revo Uninstaller Pro

Add to Exclude List – Adds the full path of the current Registry key to the exclude list thus protecting it from manipulations during the uninstall

Open Registry Key – Opens current key in the Windows Registry Editor

There are two commands available from the context menu of the list of values:

Uninstall selected values – uninstalls selected values. To select more than one value you can use left mouse button pressed and press **Ctrl** key from the keyboard to select random values or **Shift** key to select group of values

Open Parent Registry key – opens the key owner of selected value in the Windows Registry Editor

Possibly related files and folders on your hard drive(s) you can press the **Next** button of the wizard and you will see the list of files and folders. In the lower part of the window there are two counters that show the numbers of shown files and folders. If you want to uninstall some files and folders you have to check mark some existing file or folders or use “**Select All**” button to check all existing items and then uninstall them pressing “**Uninstall**” button

There are two commands available from the context menu of the list of file and folders:

Open – command on the context menu which acts the same way if you double click on a file or folder in Windows Explorer. Note that if there is no file association for the file you click on then nothing will happen.

Properties – command on the context menu, which acts the same way if you right-mouse click on a file and choose **Properties** – shows properties like file size, attributes, date of creation, modification etc.

3.3. Forced Uninstall

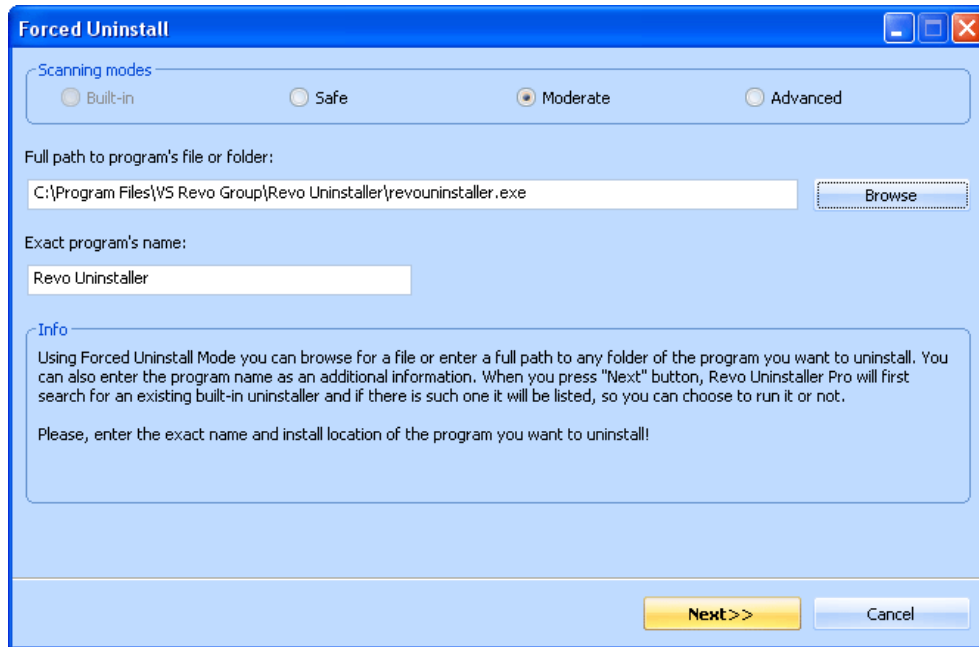
Revo Uninstaller Pro has a very powerful feature called Forced Uninstall. This feature allows you to remove leftovers of programs that are already uninstalled, incomplete installations and uninstall remnants of programs! It does not matter if the program, you want to remove, is not listed in Revo Uninstaller Pro or in Windows Add/Remove Programs Control Panel applet. Forced Uninstall gives power to the user but still keeps the safety and the accuracy of the results.

Forced Uninstall requires two parameters to get the job done. At least one of these two parameters should be supplied! First parameter is the full path to the program you want to uninstall or full path to its install location – to its main folder. You can manually enter the path but you can also use the **Browse** button.

*Using the **Browse** button to locate the program's executable file (exe) is recommended!*

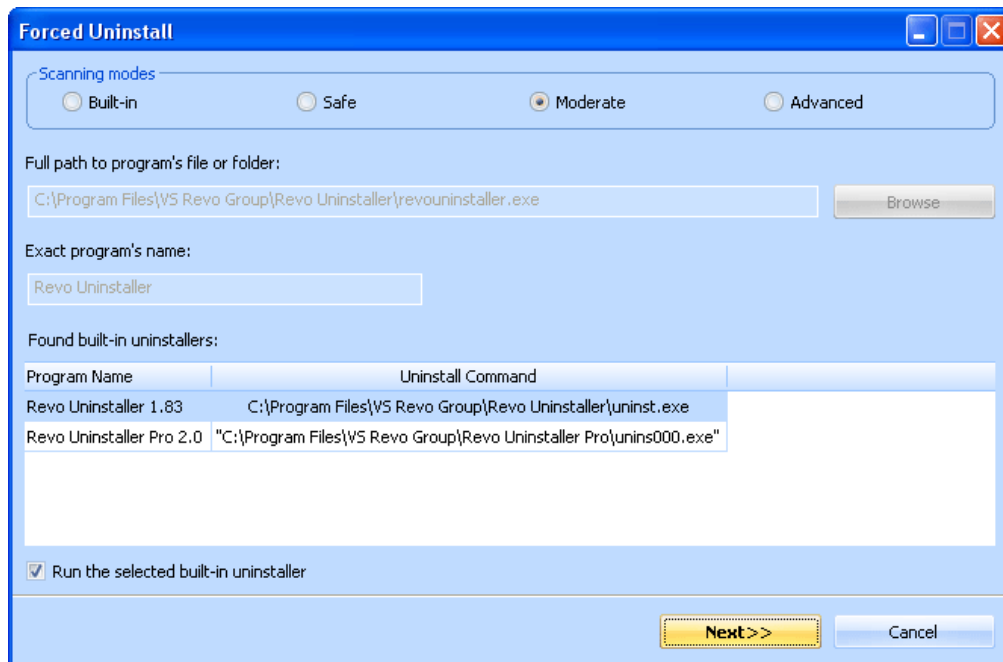
You can enter the full path to the install location of an already uninstalled and not existing program!

You must enter the exact name of the program you want to remove, because the name you entered is searched on your system for, so if you enter a wrong name you will get wrong results! For example if you want to remove Microsoft Office 2007 you have to enter **Microsoft Office Enterprise 2007**, and not: Office, MS Office, Microsoft!

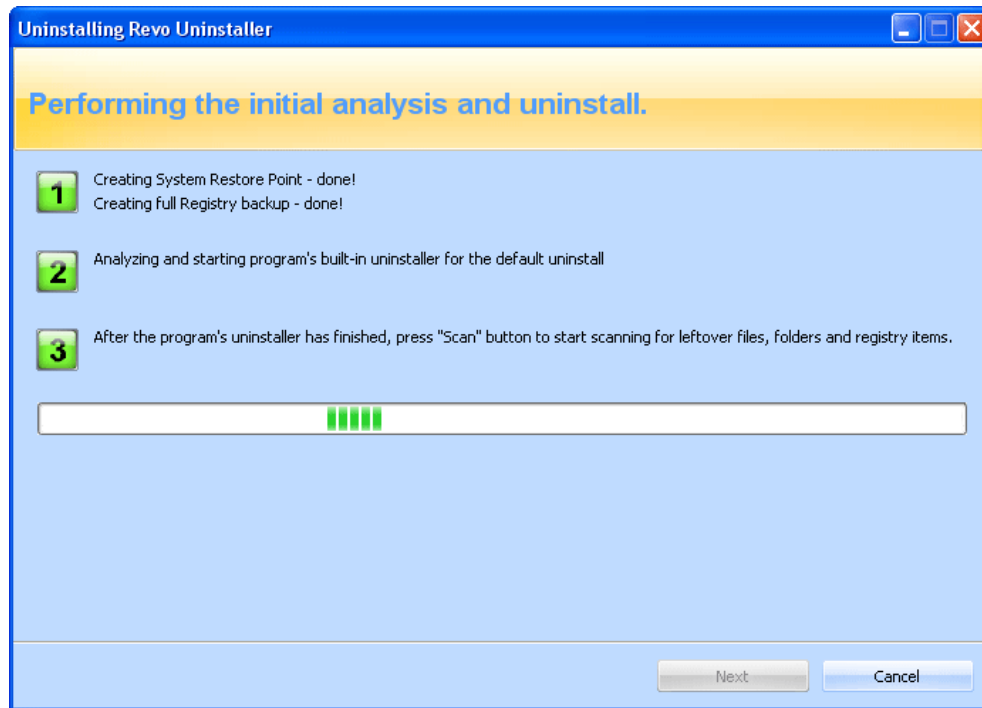


Pressing **Next** button on Forced Uninstall window will trigger Revo Uninstaller Pro to search for a built-in uninstaller of the program you want to uninstall. If there is a built-in uninstaller, or several possible uninstallers are found, Revo Uninstaller Pro will list them in the same Window, so you can choose to run found one or not. Uncheck mark **Run selected built-in uninstaller** if you do not want to run the built-in uninstaller.

When **Run selected built-in uninstaller** is unchecked pressing **Next** button shows you another window where Revo Uninstaller Pro first creates a system restore point and full registry backup (if that options is not disabled in Options -> Uninstaller), and then starts scanning for leftovers.



If you want to run the found built-in uninstaller before scanning for leftovers just select it and press **Next** button. A new window containing 3 steps will show up



Revo Uninstaller Pro will run the built-in uninstaller and after you finish uninstallation with it, you have to press **Scan** button to continue the uninstall process with Revo Uninstaller Pro. Note that the built-in uninstaller may show up behind other open windows and you may need to switch between windows by using **Alt+Tab** keyboard keys – press and hold **Alt** key and then press **Tab**.

Pressing **Scan** will trigger scanning for leftovers and the results (if any) will show up automatically. Revo Uninstaller Pro first shows you found leftover registry items. Registry keys and values found as created by the uninstalled program are **bold**! Not bold keys are considered as not created by the uninstalled program. You can also check mark them but they will not be deleted! They have check mark options just because it is easier to select the top parent and automatically its sub items are check marked – no need to go through all sub items and check mark them separately. So, whatever you check mark, when you press **Delete** button check marked bold items only are going to be deleted, even when **Select All** button is used.

Deleted registry items are backed up, so if you need them later you can restore them from Backup Manager!

There is also a context menu which you can see by right-mouse clicking on the leftover items.

Expand All – expands all items of the shown registry tree – by default it is expanded so you may not see any difference first time you use this command

Collapse All – collapses all items of the shown registry tree

Expand selected key – expands only the selected key and its sub items

Collapse selected key – collapses selected key and its sub items

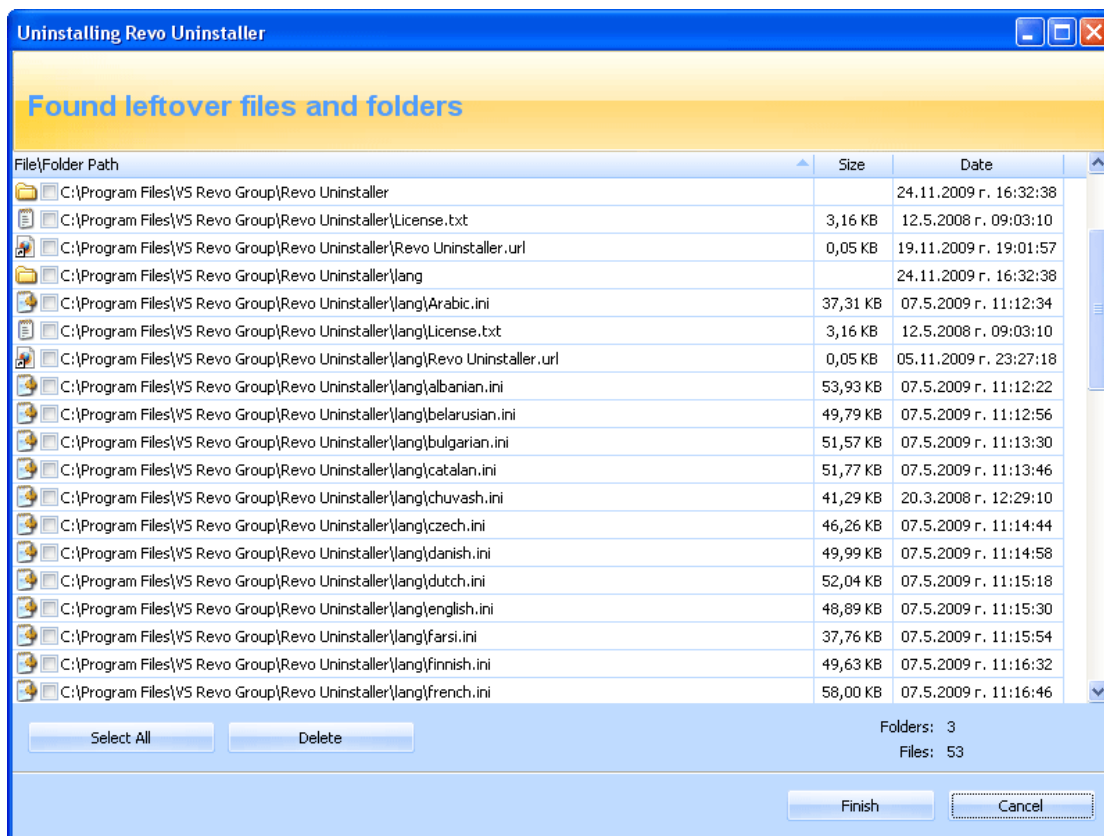
Uninstall selected key – deletes the key from the system

Mark selected key as Created – marks selected key as created by the program you are uninstalling. This feature is useful when you see a registry key which for sure is created by the program, but not marked as created because of the safety algorithms in Revo Uninstaller Pro.

Add to Exclude List – adds the selected key to exclude lists, which protects the key from deletion. Excluded keys have **red** color and you can edit Exclude List in Revo Uninstaller Pro's options.

Open Registry Key... - open selected registry key in Windows Registry Editor (regedit)

After finishing registry leftovers removal you can press **Next** button and continue with the file and folder leftovers. Note that **Next** button may not be available if there are no other leftovers found!



Revo Uninstaller Pro shows you found leftover files and folder so you can check the results and delete them. Deleted files and folders are moved to the Recycle Bin by default, so you can recover them from there. You can also change that from **Options -> All Programs**. You can also see how many leftover files and folders are found. There is also a context menu, which you can use by right mouse-click on a file of folder.

Open – command on the context menu which acts the same way if you double click on a file or folder in Windows Explorer. Note that if there is no file association for the file you click on then nothing will happen.

Properties – command on the context menu, which acts the same way if you right-mouse click on a file and choose **Properties** – shows properties like file size, attributes, date of creation, modification etc.

You can use **Select All** button to select all found leftover files and folders at once and then use **Delete** button to delete them.

3.4. Install Programs

Revo Uninstaller Pro has a feature that allows monitoring of installation of a program and detects system changes during that installation. The process is done in real time – simultaneously!

This feature is very powerful because by monitoring system changes during the installation, we eliminate all the scanning algorithms when we need to uninstall that program and nevertheless we can still use these algorithms but in another feature called Forced Uninstall.

Revo Uninstaller Pro is monitoring system changes - proceed with the installation as usual! Please, DO NOT run any other setup files, programs or anything else, during the installation of the program! After you finish the installation, run installed program(s), configure and close them. Then press "Stop" button (red square) and Save the log.



Scanning algorithms are very good on detecting leftovers but Revo Uninstaller Pro has also safety algorithms that are blocking listing of some leftovers because of the system safety. With this feature we monitor system changes and we are sure that the changes are made by the installed program.

There is a big restriction for using that feature - you cannot install two or more programs at the same time or run/start other programs during the installation! You can run/start one setup file, which can install many programs but you cannot run many setup files!

IMPORTANT! Please, do NOT run/start any other setup files, programs or anything else, which could lead to system changes, during the installation of a program!

Basically, you can do all that but the log file, which is created after installation will contain also the changes made by other setup files and/or programs. You can use **Custom Uninstall** mode on **Traced Programs**, which allows you to mark and uninstall the things you want. So, even if you by mistake start another program or setup you can still remove only the program you uninstall!

This feature has one more big advantage – because it works in real time it does not require additional time for installation of a program. It is very easy to use and requires only few steps to get maximum results.

To install programs through Revo Uninstaller Pro you have two options:

- Use the **Install Programs** toolbar button of the uninstaller or **Install Programs** command from the **Commands** menu of the uninstaller. Browse for the setup file of the program you want to monitor and follow the instructions of the installation wizard of the program you are installing – as usual.

Or there is another option:

- Right-mouse click on the setup file of the program you want to install and choose **Install with Revo Uninstaller Pro** command. Then follow the instructions of the install wizard as usual.

When installation process is started through Revo Uninstaller Pro a toolbar like band will be shown at the top of your screen. The installation process will continue in the usual way and Revo Uninstaller Pro will monitor system changes during the installation. You can change that band with a little toolbar from

Options -> Trace programs in compact mode

When you finish installing the program we advise you to run it (if there are several components run them all) and configure it. This way Revo Uninstaller Pro will log the configuration settings and when you uninstall that program it will remove also these settings.

After running the program you have to press **Stop** button on the Revo Uninstaller Pro's band. Then Revo Uninstaller Pro will suggest you a name for the log. That name will be listed in **Traced Programs** tab in the uninstaller. You can change the name if it is not so accurate suggestion and then press **Save** button.

Here is the summary you have to do to install programs with Revo Uninstaller Pro:

- 1. Right-mouse click on the setup file of the program you want to install (or use Install Programs toolbar button in Revo Uninstaller Pro)**
- 2. Install the program as usual**
- 3. Start and configure the program (programs)**
- 4. Press Stop and Save on the band (toolbar)**

Some programs require restarting before you able to run them for the first time. If that is the case you have to **Stop** monitoring, **Save** the log and then restart. Revo Uninstaller Pro has the ability to detect system restarts and save the log automatically, but in this case the name of the log will be the name set by Revo Uninstaller Pro.

3.5. Hunter Mode



Hunter mode is an innovative and flexible feature of Revo Uninstaller Pro, which gives you ability with one click to uninstall, stop or delete only by aiming applications icon on the desktop, quick launch toolbar, system tray or opened application. This can be very useful because a lot of applications are loading on start up and stay in the system tray without your agreement or you don't even know which that application there is.

When you press "Hunter mode" button on the main toolbar of Revo Uninstaller Pro current window will disappear and a small blue target window will appear at the right upper corner of your screen. Hunter mode is now activated.

There are some main options in Hunter mode, which are available on its context menu (right-mouse click):

Open main window – open Revo Uninstaller Pro's main window and exits Hunter mode

Auto Start with Windows – sets Hunter Mode to start automatically on Windows startup

Window's size – there are three available size of current window – Small, Middle and Large

Transparency - sets the Hunter Mode window's transparency – 50% by default

Help – opens current help page

EXIT – exit Revo Uninstaller Pro

To operate in Hunter mode you have to do the following steps:

1. Press the left mouse button over the blue target window and hold it pressed
2. Move the mouse over an item supported by Hunter mode (desktop shortcut, open window, icon etc.), while doing this, a tool tip is shown with information about the application you will select if you release the button
3. Release the left mouse button and a menu will show up
4. Select desired command from that menu:

Uninstall – start the Forced Uninstall module of Revo Uninstaller Pro

Stop Auto Starting – disable the application from auto start when Windows starts

Kill – Stop the application

Kill and Delete – stop and delete the application

Open Containing Folder - Open a new instance of windows explorer and explore the directory, where the application is located

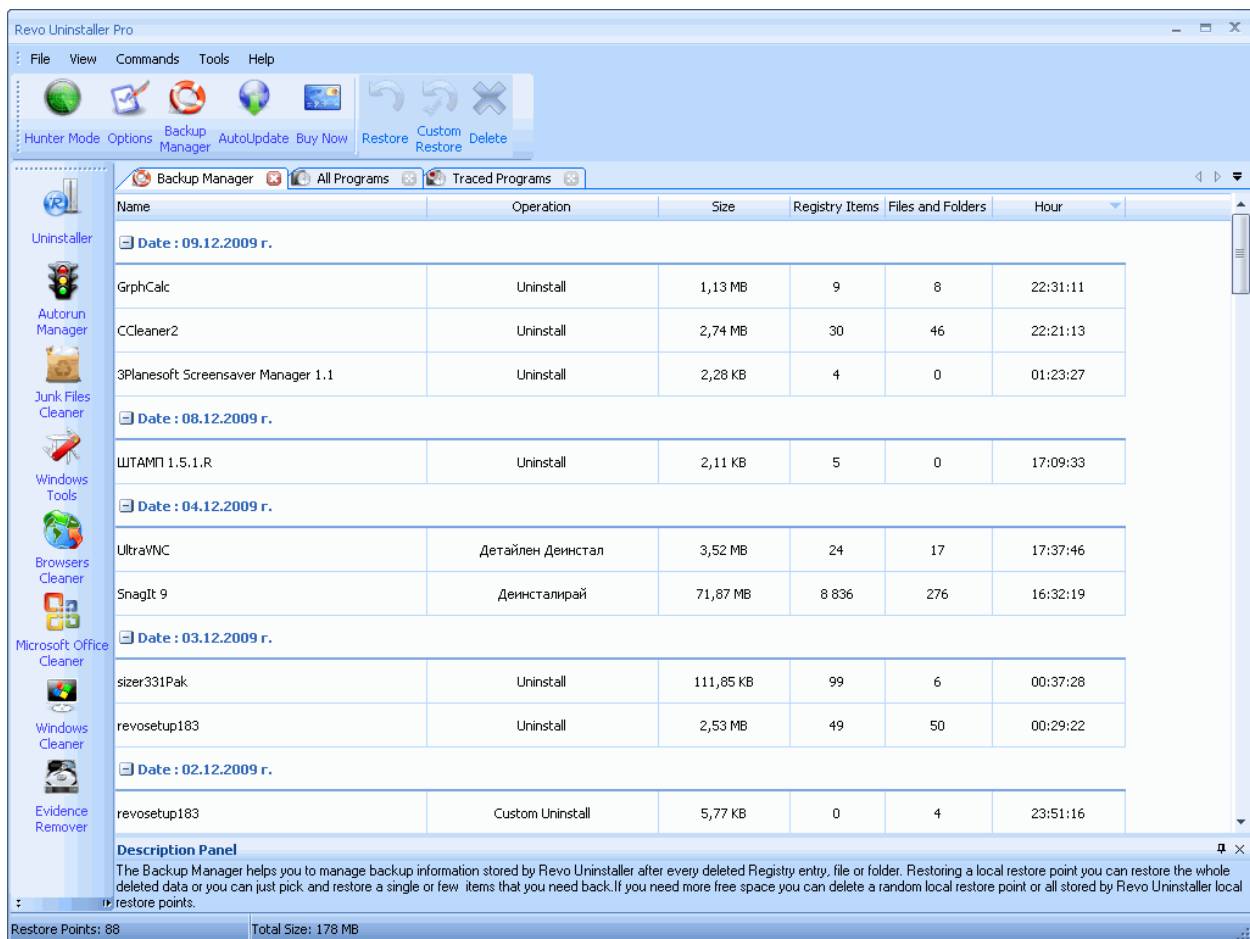
Search at Google for - Use it to search with Google for the application name, file name or the company name - producer of selected application. This command will open your default web browser and load the result of current search in the Google web site

Properties - Show application's executable file's properties

Cancel – Cancel the operation

4. Backup Manager

Backup Manager helps you to manage backup information stored by Revo Uninstaller Pro after deletion of registry entries, files and folders if the appropriate options are set. Restoring a local restore point, you can restore the whole deleted data, or you can just pick and restore a single or few items that you need back. If you need more free space you can delete a random local restore point or all stored by Revo Uninstaller Pro local restore points.



Revo Uninstaller Pro

File View Commands Tools Help

Hunter Mode Options Backup Manager AutoUpdate Buy Now Restore Custom Restore Delete

Backup Manager All Programs Traced Programs

Name	Operation	Size	Registry Items	Files and Folders	Hour
Date : 09.12.2009 r.					
GrphCalc	Uninstall	1,13 MB	9	8	22:31:11
CCleaner2	Uninstall	2,74 MB	30	46	22:21:13
3Planesoft Screensaver Manager 1.1	Uninstall	2,28 KB	4	0	01:23:27
Date : 08.12.2009 r.					
ШТАМП 1.5.1.R	Uninstall	2,11 KB	5	0	17:09:33
Date : 04.12.2009 r.					
UltraVNC	Детайлен Динстал	3,52 MB	24	17	17:37:46
Snagit 9	Динсталирай	71,87 MB	8 836	276	16:32:19
Date : 03.12.2009 r.					
sizer331Pak	Uninstall	111,85 KB	99	6	00:37:28
revoresetup183	Uninstall	2,53 MB	49	50	00:29:22
Date : 02.12.2009 r.					
revoresetup183	Custom Uninstall	5,77 KB	0	4	23:51:16

Description Panel

The Backup Manager helps you to manage backup information stored by Revo Uninstaller after every deleted Registry entry, file or folder. Restoring a local restore point you can restore the whole deleted data or you can just pick and restore a single or few items that you need back. If you need more free space you can delete a random local restore point or all stored by Revo Uninstaller local restore points.

Restore Points: 88 Total Size: 178 MB

Restore points of deleted by Revo Uninstaller Pro information are done when you delete data using the “Uninstaller” (in “All Programs” mode or “Traced Programs” mode) or “AutoRun Manager” tool.

By default the option “Options->Uninstaller->Back up deleted Registry items” is turned on and Revo Uninstaller Pro backed up deleted Registry data. Also by default deleted files and

folders are not backed up by the Backup Manager. They are deleted to the Recycle Bin, if you want to backup them you have to switch the option “Options->Uninstaller->Delete files and folders” to “to Backup folder”

Main window of the Backup Manager shows you all local restore points created by Revo Uninstaller Pro. By default they are grouped by date of creation and sorted by hour of creation. There are some properties for every restore point in the list as: name of the operation, size of the backup point, number of items etc.

Available commands are:

Restore – After the command is executed the restore of Registry items, files and folders starts and you can see the progress of the process. When it completes the window closes automatically.

Custom Restore - After the command is executed, you see the restore wizard with one or two steps depending on the items you can restore. If there are Registry items in the backup you will see a tree with Registry items that you can restore. You have to set check marks for items you want to restore or if you want to restore all of them you can use the **Select All** button to check mark them all. To start the restore operation press **Restore** button and you see a window showing you the progress of restoration. If there are files and folders in the backup you can press the **Next** button of the wizard and you will see the tree of files and folders that can be restored. Again you have to set check marks or use **Select All** button to mark items and then restore them pressing **Restore** button

Delete - If you execute the command the restore point will be removed from the list and the information that it consist of will be deleted to the Recycle Bin. If you want to free up the space allocated by that restore point you will have to empty your Recycle Bin after the deletion.

Delete All - This command is available only from main menu **Commands**. If you execute the command all restore points and information that they store still be removed, the list will be emptied. All the information is deleted to the Recycle Bin, so to free up used by the restore points space you will have to empty the Recycle Bin.

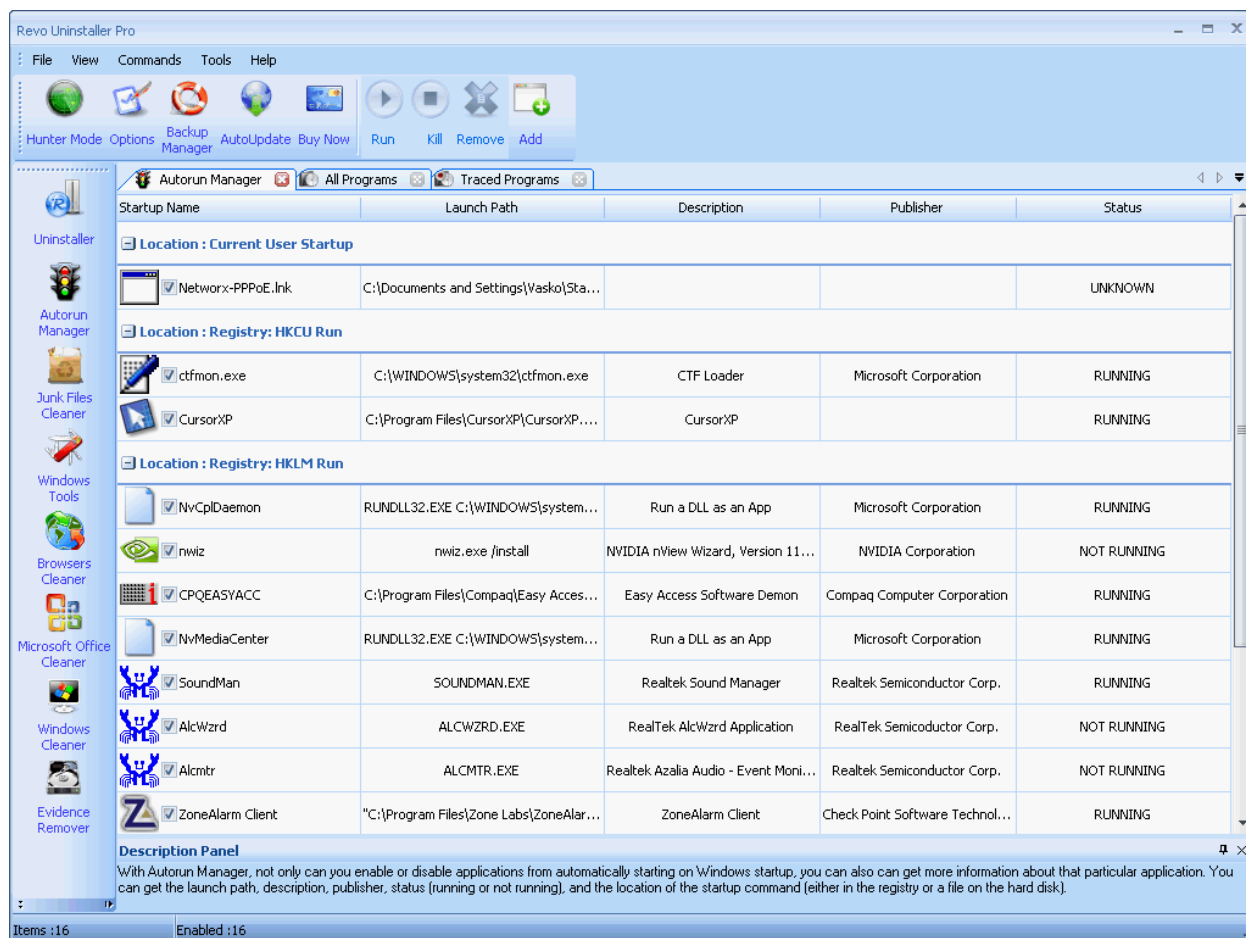
[5. Tools](#)

Revo Uninstaller Pro gives you 8 handy and powerful tools to clean up your system. You can access the tools by a toolbar, which is shown by default or by Tools menu. If no Tools menu and no toolbar are shown you have to right-mouse click on the status bar (bottom of Revo Uninstaller Pro’s main window) and check mark Menu Bar option, and then you will see Tools menu.

5.1. AutoRun Manager

Auto Run Manager allows you to manage auto running programs on Windows startup. With this tool you can not only enable or disable applications from auto starting on Windows startup but also you can get more information about a particular application which is set to run when Windows starts. You can get information about the publisher of the auto starting program, its description, its launch path - where it is saved on your computer or the status of the application - if it's running or not. If this information is not enough to decide whether to enable or disable the program from auto starting, you can get more information about the publisher and the executable file name directly from Google with just one right-mouse click.

When you buy a brand new computer it has no or few applications which are loaded at Windows startup. During the time when you install new applications to your PC some of these applications are installed as auto starting on Windows startup. You can see some of them in the "system tray" (near the clock) as small icons. Often such applications are messengers, adware, advertisement programs and applications you do not need to start automatically.



The screenshot shows the Revo Uninstaller Pro interface. The main window is titled "Autorun Manager" and displays a list of startup programs. The interface includes a menu bar (File, View, Commands, Tools, Help) and a toolbar with icons for Hunter Mode, Options, Backup Manager, AutoUpdate, Buy Now, Run, Kill, Remove, and Add. The left sidebar contains various utility icons like Uninstaller, Autorun Manager, Junk Files Cleaner, Windows Tools, Browsers Cleaner, Microsoft Office Cleaner, Windows Cleaner, and Evidence Remover.

Startup Name	Launch Path	Description	Publisher	Status
Location : Current User Startup				
<input checked="" type="checkbox"/> Networx-PPPoE.Ink	C:\Documents and Settings\Vasko\Sta...			UNKNOWN
Location : Registry: HKCU Run				
<input checked="" type="checkbox"/> ctfmon.exe	C:\WINDOWS\system32\ctfmon.exe	CTF Loader	Microsoft Corporation	RUNNING
<input checked="" type="checkbox"/> CursorXP	C:\Program Files\CursorXP\CursorXP...	CursorXP		RUNNING
Location : Registry: HKLM Run				
<input checked="" type="checkbox"/> NvCplDaemon	RUNDLL32.EXE C:\WINDOWS\system...	Run a DLL as an App	Microsoft Corporation	RUNNING
<input checked="" type="checkbox"/> nwiz	nwiz.exe /install	NVIDIA nView Wizard, Version 11...	NVIDIA Corporation	NOT RUNNING
<input checked="" type="checkbox"/> CPQEASYACC	C:\Program Files\Compaq\Easy Acces...	Easy Access Software Demon	Compaq Computer Corporation	RUNNING
<input checked="" type="checkbox"/> NvMediaCenter	RUNDLL32.EXE C:\WINDOWS\system...	Run a DLL as an App	Microsoft Corporation	RUNNING
<input checked="" type="checkbox"/> SoundMan	SOUNDMAN.EXE	Realtek Sound Manager	Realtek Semiconductor Corp.	RUNNING
<input checked="" type="checkbox"/> AlcWzrd	ALCWZRD.EXE	RealTek AlcWzrd Application	RealTek Semiconductor Corp.	NOT RUNNING
<input checked="" type="checkbox"/> Alcmtr	ALCMTR.EXE	Realtek Azalia Audio - Event Moni...	Realtek Semiconductor Corp.	NOT RUNNING
<input checked="" type="checkbox"/> ZoneAlarm Client	"C:\Program Files\Zone Labs\ZoneAlar...	ZoneAlarm Client	Check Point Software Technol...	RUNNING

Description Panel
With Autorun Manager, not only can you enable or disable applications from automatically starting on Windows startup, you can also can get more information about that particular application. You can get the launch path, description, publisher, status (running or not running), and the location of the startup command (either in the registry or a file on the hard disk).

Items : 16 Enabled : 16

When an application is started it takes resources such as RAM, CPU time. The amount of these resources depends on started applications but no matter how much memory and resources it takes when the number of started applications is bigger the slower is your computer.

If you want a program to start automatically when Windows starts, a common place to put the program is in the Startup folder of the Start Menu.

Some applications as anti-virus, firewalls and system programs must be started on Windows startup to keep your system running smoothly and without problems. Get information for an auto running program as much as possible and decide to enable or disable it.

The most common task you would like to do is to disable/enable an application from auto starting when the Windows operation system is started. This can be done with a single click; all you have to do is to uncheck/check the check box in front of the application.

You can right-mouse click on the column header and show or hide some of the columns. This way you can also choose what to print.

There are several commands you can use in AutoRun Manager:

Run - You can run an application, which status is "NOT RUNNING" just by selecting the application in the list of applications and press "Run" button on the toolbar.

Kill - You can stop an application, which status is "RUNNING" just by selecting the application in the list of applications and press "Kill" button on the toolbar

Remove - If you want to remove an application from the list and prevent its auto loading when Windows is starting then you have to select the application and press "Remove" button from the toolbar. Note that it is better to uncheck mark it only, because in that way it will be removed from startup but will remain in the list of AutoRun Manager so you can check mark it again if you need it in future.

Add - You can add programs to start automatically on Windows startup.

Name - Enter the name of the program and that name will appear in AutoRun Manager

Command (full path) - full path to the program you want to run automatically. You can also add parameters, but if you do so add quotes to the path i.e.:

"C:\Program Files\VS Revo Group\Revo Uninstaller Pro\revounin.exe" /hunter

Set auto start for:

All users - if you want that program to start on every user login

Current user - if you want that program to start when only current user is logged

Select to auto-start from:

Registry: Run – on every startup of Windows – this option will add startup setting to Windows registry, which is common place for auto startups.

Registry: RunOnce – only once on the next startup of Windows – this option is similar to previous one but will start the program only once and then that registry key will be deleted automatically by Windows .

Startup Folder – on every startup of Windows – this option will add a shortcut to the program in Startup folder, which is also common place for startups and accessible from Start menu -> All Programs

There are more commands which you can execute over selected application:

Run Process - run selected application

Kill Process - stop selected application

Search at Google for - use it to search with Google for the selected start up name, file name, publisher name or description. This command will open your default web browser and load the result of current search in the Google web site

Open containing folder - opens a new instance of windows explorer and explore the directory, where the selected application is located

Go to Location - opens "Registry Editor" and open the registry key with auto starting information of selected application

Open Registry Key - opens "Registry Editor" and the registry key with the uninstall information of selected application

Remove selected - remove selected application from the list

Remove all not valid - remove all applications with status "not valid" from the list

Remove all not running - remove all applications with status "not running" from the list

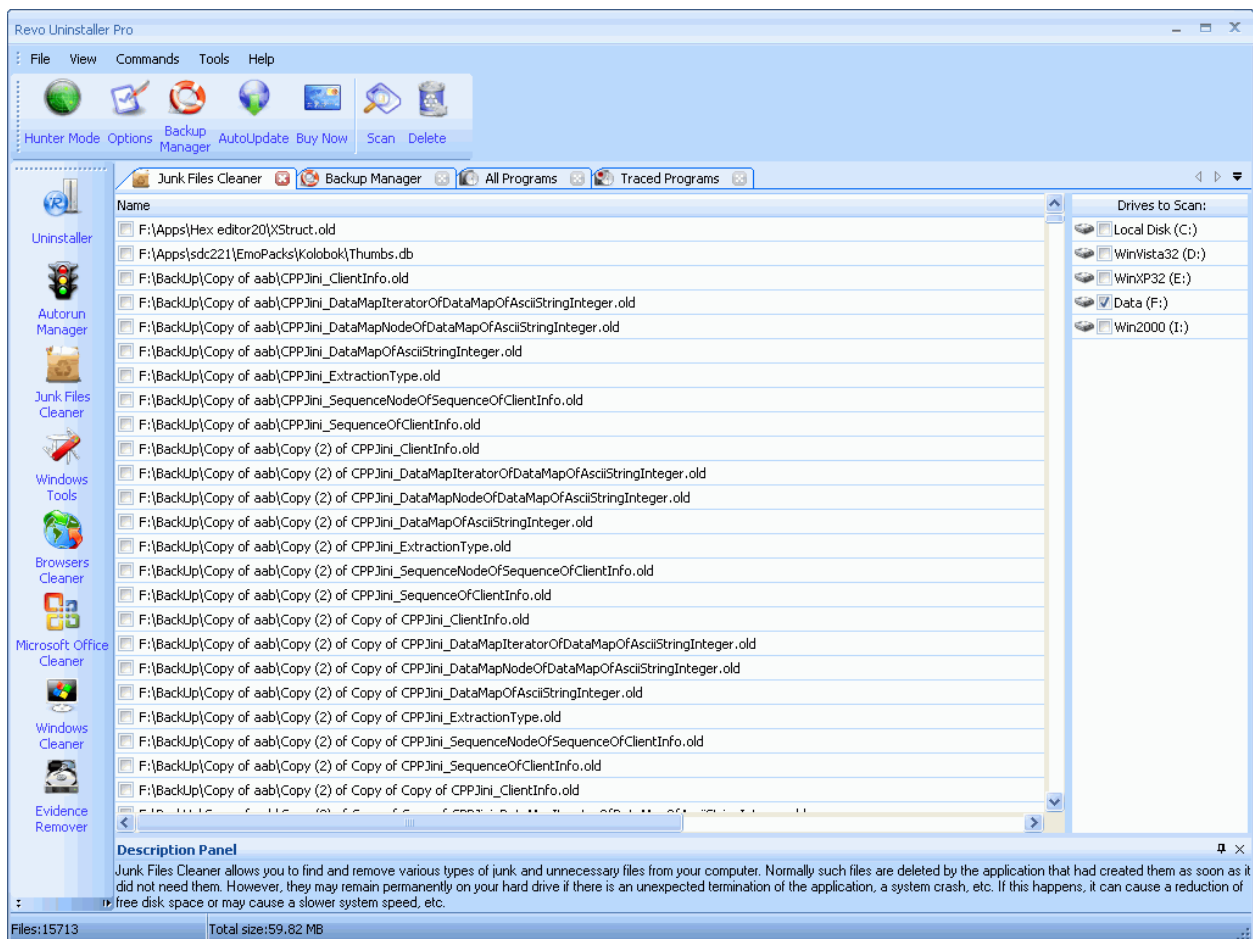
Remove all disabled - remove all disabled applications from the list

Properties - show application's properties

5.2. Junk Files Cleaner

Junk Files Cleaner allows you to find and remove various types of junk and unnecessary files from your computer. Many of the Windows applications create junk files. Normally, such files are deleted by the application that had created them as soon as it did not need them. However they may remain permanently on your hard drive if there is an unexpected termination of the parent application, a system crash, etc. If this happens, it will cause reduction of free disk space (even hundreds of megabytes) or may slow down system speed and performance

With Junk Files Cleaner you can select which of your drives to scan and what extension of files to scan for. The most common temporary and junk files extensions are built-in, but you can also add whatever extension you want.



Commands of Junk Files Cleaner

Scan - to start scanning for junk files just press button "Scan" from the current toolbar or from Command menu. This action will perform a scan operation with your current options. A small window appears to wait until the scan is complete. There is a

"Cancel" button on that window, if you press it the scan process will be interrupted and you will only see the junk files found until that moment.

Delete - after the scan process is completed all found files are loaded in the list with their full path and name and their size. To delete any file of shown press "Delete" button and all check files will be deleted.

There are more commands which you can execute over selected file(s):

Open – open selected file

Search at Google for – Use it to search with Google for the name of the selected file. This command will open your default web browser and load the result of current search in the Google web site

Open containing folder - Open a new instance of windows explorer and explore the directory, where the selected file is located.

Properties – Show file's properties

Check all items – Set a check in front of all items in the list

Uncheck all items – Remove the check in front of all items in the list

Check all selected items - Set a check in front of all selected items in the list

Uncheck all selected items - Remove the check in front of all selected items in the

list

You can adjust settings on Junk Files Cleaner by pressing "Options" button in the toolbar or from the Tools menu.

5.3. Windows Tools

There are a lot of handy and useful tools and components bundled with every Windows operating system. Some of them are with complex command line options, others are difficult to access. Windows tools give you a fast - one click - access to more than ten tools of Windows, which you use in your daily work. Almost all of them are included in Windows XP, Windows Vista and Windows 7.

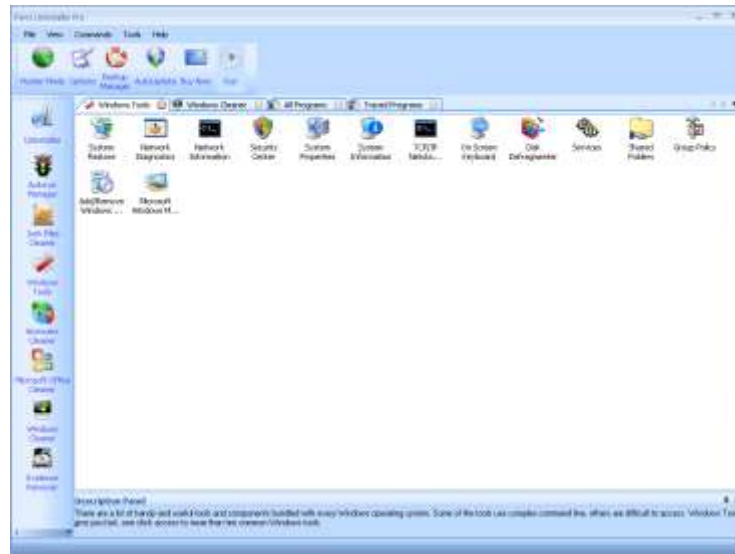
System Restore

System Restore is a component of Windows operating system that you can use to restore your computer to a previous state, if a problem occurs, without losing your personal data files (such as Microsoft Word documents, browsing history, drawings, favorites, or e-mail). System Restore monitors changes to the system and some application files, and it automatically creates easily identified restore points. These restore points allow you to revert the system to a previous time. They are created daily and at the time of significant system events (such as when an application or driver is installed). You can also create and name your own restore points at any time.

Network Diagnostics

Network Diagnostics is a component of Windows operating system that you can use to gather and display information about your computer hardware and operating system, your

internet configuration, and your modem and network adapter configuration. With the Network Diagnostics tool, you can perform a scan of your system and test network connectivity and whether or not your network-related programs and services are functional. It gathers a variety of basic information about the computer system which can be helpful when given to a support person trying to help you troubleshoot your system



Network Information

Network Information use a component of Windows operating system that you can use to display all current TCP/IP network configuration values and refresh Dynamic Host Configuration Protocol (DHCP) and Domain Name System (DNS) settings, Displays the full TCP/IP configuration for all adapters including IP address, MAC address, subnet mask, default gateway, Windows Internet Naming Service (WINS) and DNS configuration. Adapters can represent physical interfaces, such as installed network adapters, or logical interfaces, such as dial-up connections.

Security Center

Security Center is a component of Windows operating system that you can use to check the status of your computer for the three security essentials - Firewall, Virus protection software and Automatic Update. If a problem is detected with any of the three essentials (for example, if your antivirus program is out of date), the Security Center sends you an alert and provides recommendations for how to better protect your computer

System Properties

System Properties is a component of Windows operating system that you can use to do the following:

- * View basic information such as your CPU type and RAM memory.

- * View and change settings that control how your computer uses memory and finds certain information.
- * Find information about hardware and device properties, as well as configure hardware profiles.
- * View information about your network connection and logon profile.
- * Report system and program errors to Microsoft or your system administrator when they occur.

System Information

System Information is a component of Windows operating system that collects and displays system configuration information for local and remote computers. This includes information about hardware configurations, computer components, and software, including signed drivers and unsigned drivers. System Information is a support tool that you can use to quickly locate information about your computer and its operating system

TCP/IP Netstat Command

TCP/IP Netstat Command is a component of Windows operating system that displays all active TCP connections and the TCP and UDP ports on which the computer is listening and displays the executable involved in creating each connection or listening port. In this case the executable name is in [] at the bottom, on top is the component it called, and so forth until TCP/IP was reached. With simple words this command shows which applications are connected and on which port to the Internet and which are listening for incoming connections.

On-Screen Keyboard

On-Screen Keyboard is a component of Windows operating system that displays a virtual keyboard on the screen and allows users with mobility impairments to type data using a pointing device or joystick. On-Screen Keyboard is intended to provide a minimum level of functionality for users with mobility impairments. You also can use On-Screen Keyboard if you think that there is a Key-Logger installed on your PC and all the keys you typed are recorded. On-Screen Keyboard eliminates the possibility of recording typed keys.

Disk Defragmenter

Disk Defragmenter is a component of Windows operating system that analyzes local volumes and consolidates fragmented files and folders so that each occupies a single, contiguous space on the volume. As a result, your system can access files and folders and save new ones more efficiently. By consolidating your files and folders, Disk Defragmenter also consolidates a volume's free space, making it less likely that new files will be fragmented. The process of consolidating fragmented files and folders is called

defragmentation. After defragmentation your hard disk drive will be well-arranged and your system will work faster and with ease.

Services

A service is an application type that runs in the background. Service applications typically provide features such as client/server applications, Web servers, database servers, and other server-based applications to users, both locally and across the network. Services is a component of Windows operating system that you can use to:

- * Start, stop, pause, resume, or disable a service on remote and local computers. You must have the appropriate permission to start, stop, pause, restart, and disable services.
- * Manage services on local and remote computers.
- * Set up recovery actions to take place if a service fails, for example, restarting the service automatically or restarting the.
- * Enable or disable services for a particular hardware profile.
- * View the status and description of each service.

Shared Folders

Shared Folders is a component of Windows operating system that you can use to manage shared resources over a network, control user access permissions, session activity, shared resource properties and to view a summary of connections and resource use for local and remote computers. With Shared Folders, you can:

- * Create, view, and set permissions for shared resources.
- * View a list of all users who are connected over a network to the computer, and disconnect one or all of them.
- * View a list of files that have been opened by remote users, and close one or all of the open files.

Group Policy

Group Policy is a component of Windows operating system that includes policy settings for User Configuration, which affect users, and for Computer Configuration, which affect computers. Group Policy settings define the various components of the user's desktop environment that a system administrator needs to manage, for example, the programs that are available to users, the programs that appear on the user's desktop, and options for the Start menu. To create a specific desktop configuration for a particular group of users, use the Group Policy snap-in.

Add/Remove Windows Components

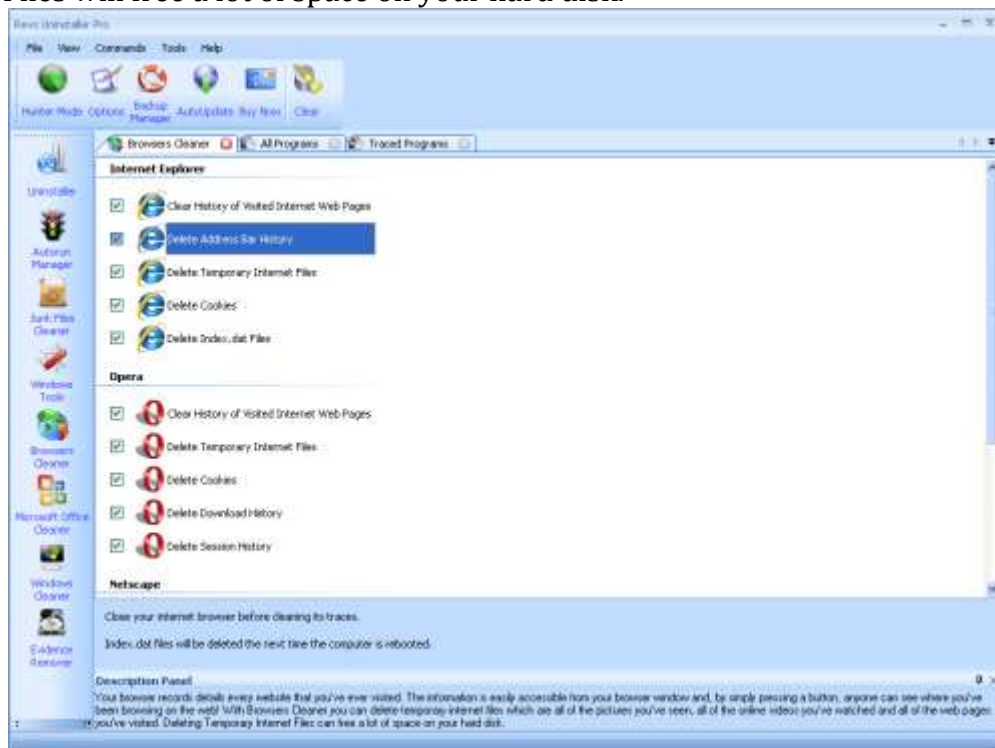
Add/Remove Windows Components helps you to manage installed Windows components on your computer. After Windows OS is installed on your computer, you can use the Add/Remove Windows Components to add a Windows component that was not included in the original installation, or to remove an existing Windows component that you no longer require.

Microsoft Windows Malicious Software Removal Tool

The Microsoft Windows Malicious Software Removal Tool checks computers running a Windows operating system for infections by specific, prevalent malicious software and helps remove any infection this is found. This malicious software includes viruses, worms and Trojan horses. When the detection and removal process is complete, the tool displays a report describing the outcome, including, if any malicious software was detected and removed.

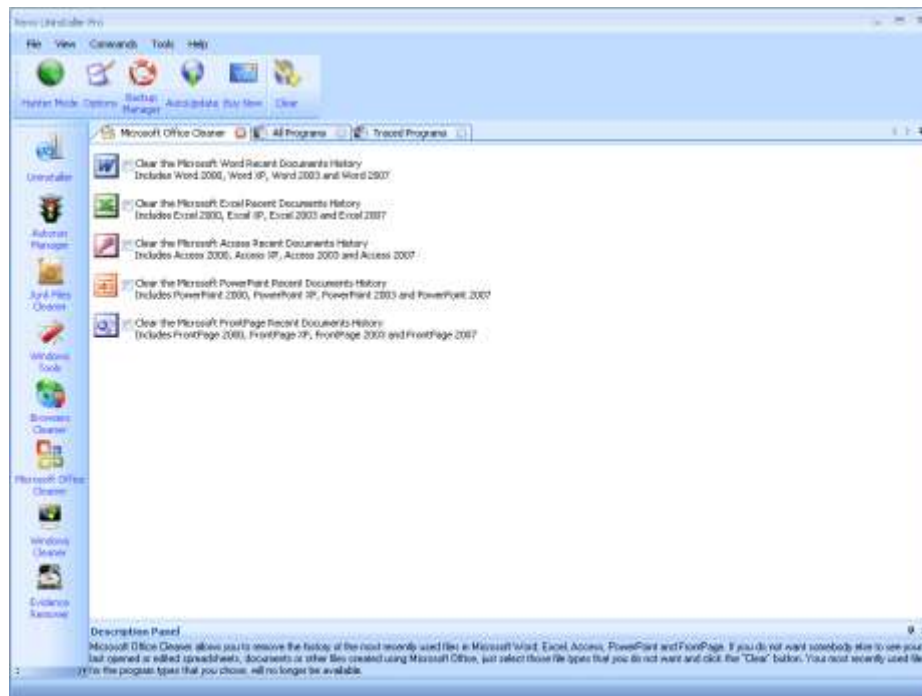
5.4. Browsers Cleaner

Your browser makes a detailed record of every web site you've ever visited. It's easily accessible from your browser window and simply by pressing a button anyone can see where you've been browsing on the web! Revo Uninstaller Pro erases web site history of web browsers including Internet Explorer, Netscape and Opera. With Browsers Cleaner you can also delete temporary internet files which are all the pictures you've seen, all the online videos you've watched and all the web pages you've visited. Deleting Temporary Internet Files will free a lot of space on your hard disk.



Depending on the history setting you want to cleanup and the browser you have, you have to put check marks on these options and press Clear toolbar button or Clear command on the Commands menu.

5.5. Microsoft Office Cleaner



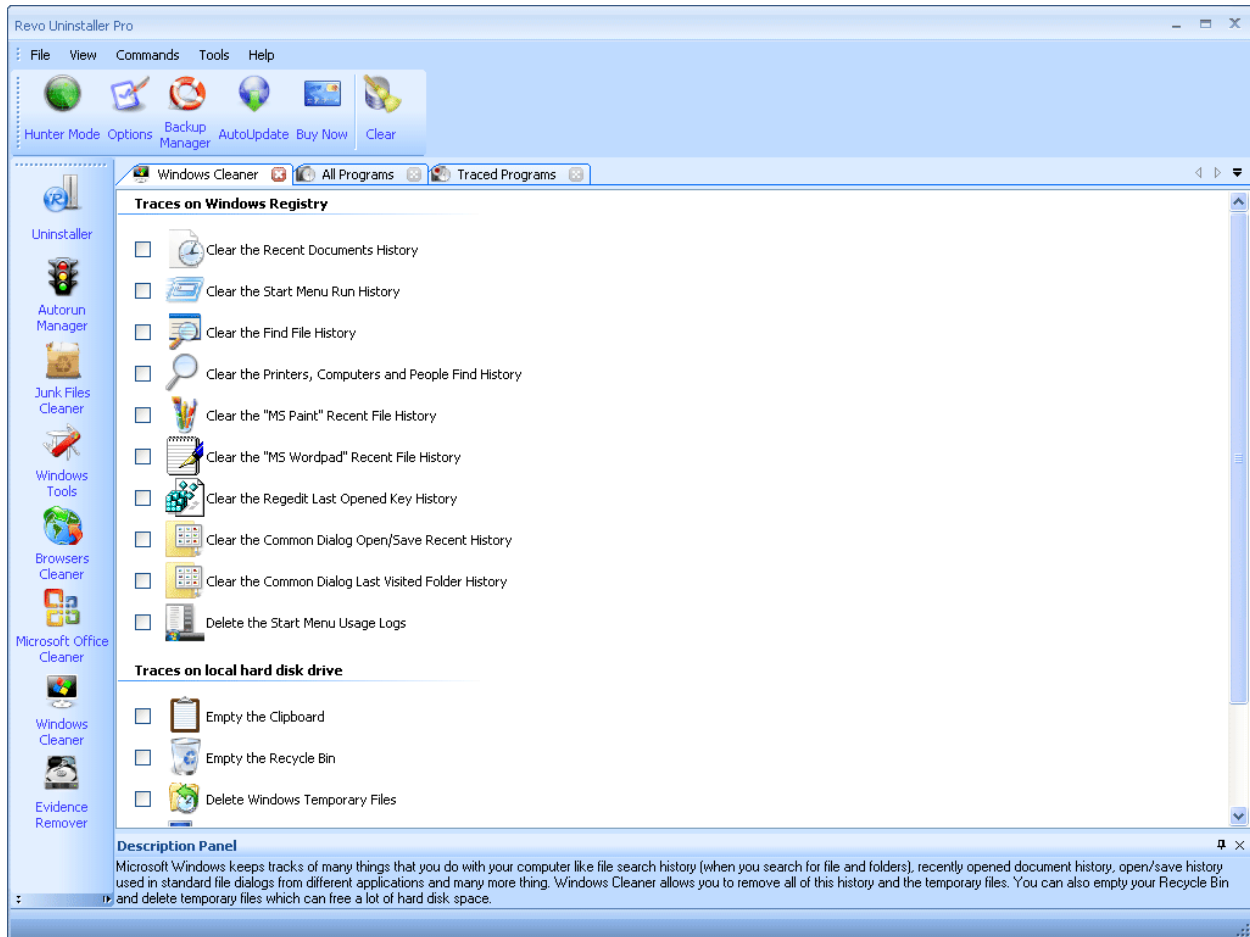
MS Office Cleaner allows you to remove history of most recently used files in MS Word, Excel, Access, PowerPoint and Front Page. If you do not want somebody else to see your last opened or edited spreadsheets, documents or other files created using MS Office just select those you do not want others to see and click the "Clear" button. Your most recently used files will no longer be listed. Windows also keeps a record of your recent files. Use MS Windows Cleaner included in included in Revo Uninstaller Pro to clear them too.

MS Office Cleaner includes the following options to clarify most recently used files of:

- Microsoft Excel 2000, XP, 2003 and 2007
- Microsoft Word 2000, XP, 2003 and 2007
- Microsoft PowerPoint 2000, XP, 2003 and 2007
- Microsoft FrontPage 2000, XP, 2003 and 2007
- Microsoft Access 2000, XP, 2003 and 2007

Depending on the program, which history settings you want to cleanup you have to put a check mark on it and then press Clear toolbar button or Clear command on the Commands menu.

5.6. Windows Cleaner



Microsoft Windows keeps tracks of many things that you do with your computer like file search history when you search for file and folders; recently opened document history; open/save history used in standard open/save dialogs from different applications installed on your computer; start menu clicks history; last opened registry key history and more. Windows Cleaner allows you to remove all this history and temporary files. It's a useful tool because you can remove all this history from one place quickly and easily. You can also empty your Recycle Bin and delete temporary files which will free more disk space.

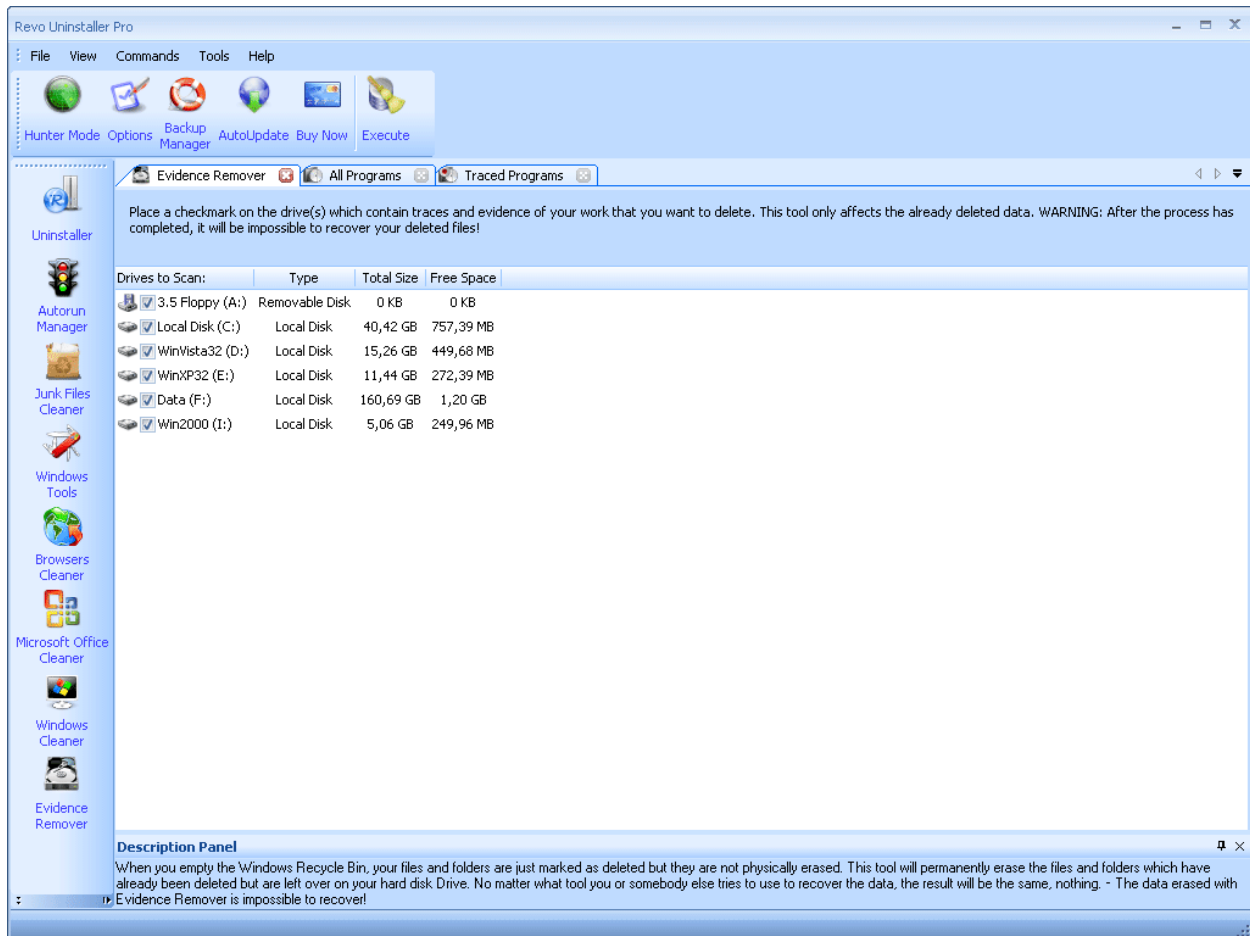
Available options of Windows Cleaner are:

- Clear Recent Documents History
- Clear Start Menu Run History
- Clear Find File History
- Clear Printers, Computers and People Find History
- Empty Clipboard
- Clear "MS Paint" Recent Files History
- Clear "MS WordPad" Recent Files History

- Clear "Regedit" Last Opened Key History
- Clear Common Dialog Open Save Recent History
- Clear Common Dialog Last Visited Folder History
- Empty Recycle Bin
- Delete Windows Temporary Files
- Delete Start Menu Click Logs
- Delete crash memory dump files
- Delete Chkdsk (Check Disk) recovered file fragments

Depending on the history item you want to cleanup you have to put a check mark on that option and press Clear button on the toolbar or Clear command on the Commands menu.

5.7. Evidence Remover



Deleting your files and folders does not mean that they are gone forever. When you empty Windows Recycle Bin your files and folders are just marked as deleted but they are not erased physically. There is a chance to recover deleted data from 10 years or older PC and this data may be very important and confidential. With any recovery tool or un-delete program you can easily get back your important documents and other files that you have

deleted. And here comes the Evidence Remove tool of Revo Uninstaller Pro. Evidence Remover will eliminate all chances to get data back from your hard drive. It will erase forever files and folders, which are already, have been deleted but left physically on your hard disk. No matter what tool you or somebody else will use to recover the data, including professional and expensive recovery and un-delete tools, the result will be always one and the same - the data erased with Evidence Remover is impossible to recover!

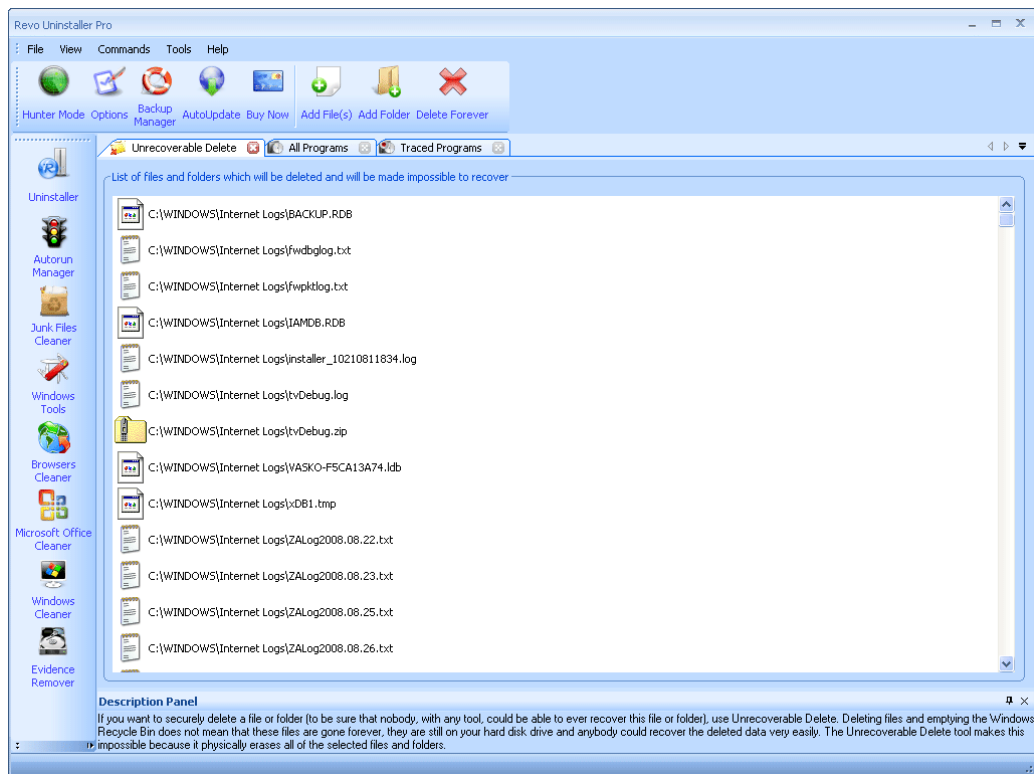
To erase already delete files and folders you have to put a check mark in front of the drive where these files are deleted from. Then you have to press Execute toolbar button or Execute command from the Commands menu.

The process is slow because the data is overwritten 3 times randomly! The speed depends on:

- Computer Processor (CPU)
- The size of the selected drive
- Running programs
- Running security software – anti-virus, Internet Security, etc.

During the process, the free disk space decreases because Evidence Remover creates a very huge file and writes random data in it. That huge file is deleted at the end of the process – the free disk space is restored.

5.8. Unrecoverable Delete

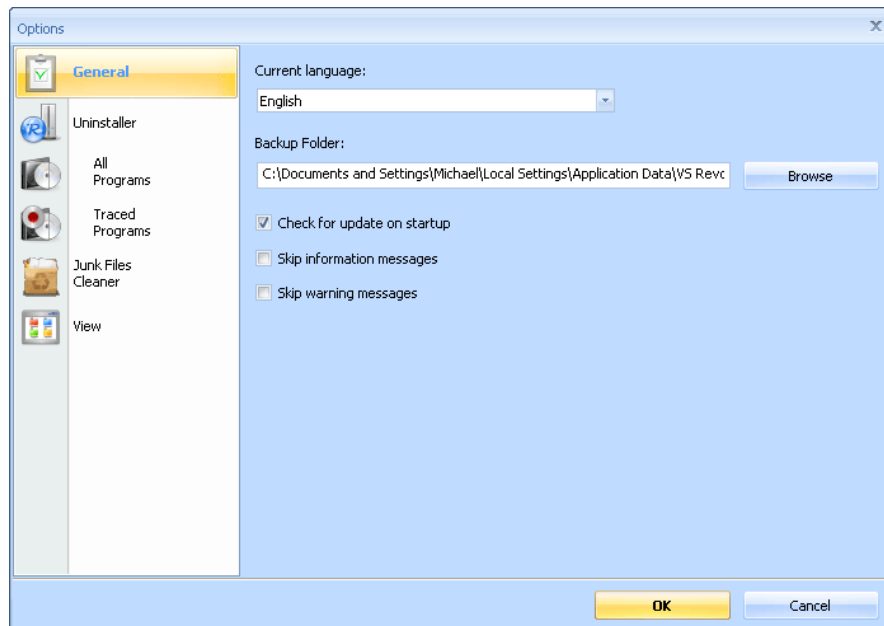


If you want to securely delete a file or folder and to be sure that nobody with any tool could be able to recover this file or folder then use Unrecoverable Delete. Deleting files and emptying Windows Recycle Bin does not mean that these files are gone forever. They are still on your Hard Disk Drive or other storage but marked as deleted. Anybody, with a tool available free or commercial, could recover deleted data very easily. Unrecoverable Delete tool of Revo Uninstaller Pro makes this impossible, even if you try to do that with the most advanced and expensive tool on the market. Deleting files in Windows means that they are marked as deleted and the space they allocated is free to use. This is because if Windows has to physically erase all deleted files it will take time and will slow down your computer. Beside this there is a lot of system, temporary and other files which are not so important to be unrecoverable. Unrecoverable Delete physically erases all the files and folders and that's why it takes more time than simple deleting.

Unrecoverable Delete has the following commands:

- **Add File(s)** – using this command you can add files for unrecoverable delete from different folders and disk drives.
- **Add Folder** – using this command you can add a folder for unrecoverable delete. All sub folders and files will be deleted permanently.
- **Delete Forever** – executes permanent erasing of the added files and folders. You can cancel the process but erased files till the cancel will be unrecoverable, so please carefully select the files and folder you want to delete!

6.Options



6.1. General

Here you can find some general options of Revo Uninstaller Pro like:

Current Language: - drop down box, which you can use to change the localization of Revo Uninstaller Pro. Note that it set when you install Revo Uninstaller Pro to the language you choose on install.

Backup Folder: - the folder, where all backups will be stored. You can change the place if the drive of the backup folder has no more free space.

Check for update on startup – Revo Uninstaller Pro will check if there is a new version available by connecting to www.revouninstaller.com on startup, but only once a day! No personal information is sent or received. Note that you have to allow Revo Uninstaller Pro to connect to the Internet in your firewall settings.

Skip information messages – if you do not want to see information messages from Revo Uninstaller Pro enable this option. Information messages are messages like “Revo Uninstaller Pro finished scanning for leftovers”.

Skip warning messages – if you do not want to see warning messages from Revo Uninstaller Pro enable this option. Warning messages are messages like “Are you sure you want to remove selected item?”.

6.2. Uninstaller

6.2.1. General

Here are the main options affecting the whole uninstaller:

Set focus on Traced Programs on startup – when Revo Uninstaller Pro is started All Programs tab is shown by default; instead you can show Traced Programs by enabling this option

Make a System Restore Point and full registry backup before uninstalling – If Windows System Restore is enabled Revo Uninstaller Pro requests from it creation of a system restore point and makes full registry backup, which you can restore from Windows Recovery Console

Backup deleted Registry items – this option will cause all manipulations on Windows Registry to be backed up! The backups can be restored from Backup Manager.

Delete files and folders:

This option shows where all deleted files are going:

- **to Backup folder** – all deleted files are backed up. This option should not be used often because all programs uninstalled by Revo Uninstaller Pro will be moved to the backup folder and that will not decrease the free disk space as it is expected. You should go to Backup Manager to restore the files or to delete them if you really do not need them anymore.
- **to Recycle Bin** – this option is similar to the previous one except that the files are moved into Recycle Bin. We recommend that option because it is safe and if you want to restore some files you just have to open the Recycle Bin. When you empty your Recycle Bin you will get additional free disk space.

- **Permanently** – all deleted files and folders are deleted permanently, so you can't restore them later. This is the fastest delete option

Show as new programs installed:

This option causes Revo Uninstaller Pro to show new programs in a separated group **New Programs**. New programs are always shown at the top of the list of programs.

- **Last (in days)** – you can specify how many days a program is considered as a new program.

- **Since the last startup of the uninstaller** – if a program is shown as a new program the next time you open Revo Uninstaller Pro that program will not be new anymore because it is shown as a new once and it is considered that the user has seen that.

6.2.2. Groups Manager

Groups Manager shows all available groups both for “All Programs” and “Traced Programs”. The groups order is important because that order is considered during the listing of programs – first group at the top of the list is shown first, second is shown second and so on. There are buttons, which you can use to move up and down (**Move Up** and **Move Down**) a group and change their order. There are also other buttons:

- **Add** – used to add a new group by entering its name
- **Rename** – used to rename a listed group by selecting it first
- **Remove** – used to remove a group by selecting it first
- **Reset Defaults** – removes all created groups and sets the default groups of Revo Uninstaller Pro, which are **Internet, Games, Multimedia** and **Utilities**

6.3. All Programs

Options here are related to the All Programs tab in the Uninstaller.

6.3.1. General

- **Show system updates (not supported in Windows Vista and Windows 7)** – the option shows Windows updates on Windows XP
- **Show system components** – some programs have additional components which are removable but marked as a component of another program and by default Revo Uninstaller Pro does not list that kind of programs.

6.3.2. Registry

When a program from **All Programs** tab is uninstalled Revo Uninstaller Pro shows the leftover registry items and some of the items we know for sure that are not created by the uninstalled program. So, we have an exclude list for these items. You are also able to add or remove such items (using **Add** and **Remove** buttons) or **Reset Defaults** – remove all added and restore all removed items.

A registry key could be excluded only by adding the full path to the key for example:

HKEY_LOCAL_MACHINE\SOFTWARE\Classes

There is an option for each registry key called **Include Subkeys**, which can be checked. That option will exclude all sub keys of that registry key – not only the key itself.

In front of each registry key there is a check box, which is used to enable or disable (depending if it is checked or not) the exclusion of a registry key. If there is a check mark then the key is considered as excluded.

Exclude list supports wild cards as (?) and (*), which means you can exclude several keys at once or without knowing the exact name of that particular registry key. For example:

HKEY_LOCAL_MACHINE\SOFT????\Classes

This will exclude all registry keys in HKEY_LOCAL_MACHINE beginning with SOFT and have 4 characters following SOFT word, because (?) sign means any character!

HKEY_LOCAL_MACHINE\SOFT*\Classes

This will exclude all registry keys in HKEY_LOCAL_MACHINE beginning with SOFT word and no matter how they end – any length, any characters after the SOFT word. You can use (*) char to replace the whole key name as:

HKEY_LOCAL_MACHINE*\Classes

But this also will exclude the whole branch like:

HKEY_LOCAL_MACHINE\SOFTWARE\Classes

HKEY_LOCAL_MACHINE\HARDWARE\Classes

HKEY_LOCAL_MACHINE\Microsoft\Classes

HKEY_LOCAL_MACHINE\Your Company\Classes

HKEY_LOCAL_MACHINE\Anything goes here\Classes

You can also use a combination of (?) and (*).

6.4. Traced Programs

6.4.1. General

Revo Uninstaller Pro creates log files when a program is installed through Revo Uninstaller Pro. The files are saved to a default folder, which can be changed if there is such need (not enough disk space).

- **Trace programs in compact mode** – the option shows a small window on top of other windows when a program is installed through Revo Uninstaller Pro – has a Stop button and Recording animation. This option is not enabled by default and that is why Revo Uninstall shows a big band at the top of the screen when a program is installed through Revo Uninstaller Pro.

6.4.2. Registry

When a program from **Traced Programs** tab is uninstalled Revo Uninstaller Pro shows the leftover registry items and some of the items we know for sure that are not created by the uninstalled program. So, we have an exclude list for these items. You are also able to add or remove such items (using **Add** and **Remove** buttons) or **Reset Defaults** – remove all added and restore all removed items.

A registry key could be excluded only by adding the full path to the key for example:

HKEY_LOCAL_MACHINE\SOFTWARE\Classes

There is an option for each registry key called **Include Subkeys**, which can be checked. That option will exclude all sub keys of that registry key – not only the key itself.

In front of each registry key there is a check box, which is used to enable or disable (depending if it is checked or not) the exclusion of a registry key. If there is a check mark then the key is considered as excluded.

Exclude list supports wild cards as (?) and (*), which means you can exclude several keys at once or without knowing the exact name of that particular registry key. For example:

HKEY_LOCAL_MACHINE\SOFT????\Classes

This will exclude all registry keys in HKEY_LOCAL_MACHINE beginning with SOFT and have 4 characters following SOFT word, because (?) sign mean any character!

HKEY_LOCAL_MACHINE\SOFT*\Classes

This will exclude all registry keys in HKEY_LOCAL_MACHINE beginning with SOFT word and no matter how they end – any length, any characters after the SOFT word. You can use (*) char to replace the whole key name as:

HKEY_LOCAL_MACHINE*\Classes

But this also will exclude the whole branch like:

HKEY_LOCAL_MACHINE\SOFTWARE\Classes

HKEY_LOCAL_MACHINE\HARDWARE\Classes

HKEY_LOCAL_MACHINE\Microsoft\Classes

HKEY_LOCAL_MACHINE\Your Company\Classes

HKEY_LOCAL_MACHINE\Anything goes here\Classes

You can also use a combination of (?) and (*).

6.4.3. Processes

When a program is installed through Revo Uninstaller Pro some of the processes should always be included and logged. You can add processes to be included in the monitoring using **Add** button and specify full path to the process. You can also **Remove** added processes or just uncheck mark them, which will remove them from consideration as included. **Reset Defaults** button will remove all added processes and add default ones.

Exclude Processes works in the same way as **Include Processes** except that processes in its list are not monitored during the installation of programs.

6.5. Junk Files Cleaner

Delete files to the Recycle Bin - if the option is check marked then all junk files are moved to the Recycle Bin. This can be considered as additional safety but will not increase the free disk space till you empty your Recycle Bin

Ignore files accessed last 24 hours - this option is enabled by default because some junk and temporary files are in use during the scan for junk files and it is better to leave them.

General Options - There is a list with all logical drives on your hard drive. If there is a check mark before the drive name, this drive will be scanned for unnecessary files when the scan operation is performing. If there is no check mark, the drive will be skipped.

There is a list with patterns (mostly file types) and their description where you can select which pattern to scan for when scan operation is performing. Files matching with a given pattern will be shown in the result list only if there is a check mark before the pattern. If you remove a check mark, the pattern after it will not be taking into consideration while scanning is being done.

Also you can add or remove patterns from the list by using underneath buttons. To add new pattern press button "Add" and a small window will appear where you can type desired pattern using wild cards (?,*) and press "OK" to add it to the list or "Cancel" to ignore operation.

To remove a pattern, select it in the list and press "Remove" button. If you want to restore the default built-in patterns, just press "Set Default" button and all your patterns will be deleted and default will be set

Exclude Options - If you wish to exclude any files contained within any directory from a scan, there is a list with patterns of paths on the local drives, where you can select which pattern to be scanned when scan operation is performing. Directories matching with a given pattern will be skipped in the scan process only if there is a check mark before the pattern. If you remove a check mark, the pattern after it will be scanned for unnecessary files.

Also you can add or remove patterns from the list by using underneath buttons. To add new pattern press button "Add" and a small window will appear where you can type desired pattern using wild cards (?,*) and press "OK" to add it to the list or "Cancel" to ignore operation.

To remove a pattern, select it in the list and press “Remove” button. If you want to restore the default built-in patterns, just press “Set Default” button and all your patterns will be deleted and default will be set

6.6. View

Revo Uninstaller Pro has Themes support and they can be changed here. There is a drop down box where you can choose from several **Visual themes**. You can also set if the toolbars should have text labels and if the icons of the toolbars should be small.

7.Registration and Activation

Revo Uninstaller Pro has 30 days free trial period. You can use it during that period without any restriction! When the free trial period is over, you can continue using it by entering a Registration Key, which you can get by purchasing a License from our web site – www.revouninstaller.com

To enter your Registration Key you have to:

1. Go to **Help** menu
2. Choose **Registration...**

Enter the received Registration Key, which you will receive after purchase of Revo Uninstaller Pro, in your e-mail, and press **Activate Online** button!

The activation requires an Internet connection because Revo Uninstaller Pro should activate and validate your License by checking our server – www.revouninstaller.com
We respect your privacy so no personal info is gathered, sent or received!

If your computer does not have an Internet connection, please contact us at support@revouninstaller.com . Please, include details of your purchase, like full name, address, order id, e-mail and License Key received from us!

8.Command Line support

Revo Uninstaller Pro supports command line options and has command processor **RevoCmd.exe**

RevoCmd.exe can be used to list installed programs on a computer. It could be used to list programs by a part of the name. It could also show the install location and the uninstall command of the program which could be then used to start the built-in uninstaller of the program.

Usage:

RevoCmd /m "program name" [/i] [/u] [/p]

/m - Match program name using wildcard characters - * and ?

The asterisk (*) wildcard represents any collection of characters

The question mark (?) wildcard represents any single character

Example: **RevoCmd /m Microso***

Shows all programs beginning with the name **Microso**

/i - Include Install Location if exists

/u - Include Uninstall command

/p - Pause on each page

/? or **/help** - This help

9. Restore Full Registry Backup

Revo Uninstaller Pro creates full registry backup once each day it has been started! It creates a full registry backup on each program uninstall by default and that could be disabled from its options. It also creates backup of registry items removed during uninstalls.

Full registry backups should be used only if Backup Manager cannot restore removed items or Windows does not start properly anymore!

Option 1: Starting the Windows Recovery Console from the Windows CD-ROM

If you have not preinstalled the Windows Recovery Console, you can start the computer and use the Recovery Console directly from your original Windows installation disc. If your computer is already in Windows and you want to add the Windows Recovery Console as a startup option, go to the next section "Adding the Windows Recovery Console as a startup option."

1. Insert the Windows CD into your CD drive and restart your computer. If you are prompted, select any options required to start (boot) from the CD.
2. When the text-based part of Setup begins, follow the prompts. Select the repair or recover option by pressing **R**.
3. If you have a dual-boot or multiboot system, select the installation that you want to access from the Recovery Console.
4. When you are prompted, type the Administrator password.

Option 2: Adding the Windows Recovery Console as a startup option

If your computer starts Windows, you can add the Windows Recovery Console as a startup option from the Windows environment. To install the Recovery Console as a startup option, follow these steps:

1. With Windows running, insert the Windows CD into your CD drive.
2. Click **Start** and click **Run**.
3. Type the following commands (where *X:* is the CD Drive letter), and then press **ENTER** on your keyboard.

X:\i386\winnt32.exe /cmdcons

Note There is a space before **/cmdcons**.

4. Click **OK** and follow the instructions to finish Setup.

Note This adds the Windows Recovery Console to the Windows Startup folder.

5. Restart your computer and select the Recovery Console option from the list of available operating systems.

Option 3: If you have already installed the Recovery Console

If you have already installed the Recovery Console, you can select it during your usual Windows Startup. To run the Recovery Console:

1. During Startup, select **Recovery Console** from the startup options menu.
2. If you have a dual-boot or multiboot system, select the installation that you want to access from the Recovery Console.
3. When you are prompted, type the Administrator password.
4. At the command prompt, type Recovery Console commands, and then you can refer to the commands that are listed in the "Available commands within Windows Recovery Console" section.

* Select your Windows installation.

* Type the administrator password. Press enter if you don't have one.

Enter the following commands:

(Assuming you have installed Windows on "Local Disk (C :)")

Step 1: **CD "C:\Documents and Settings"**

(The above command contains quotation marks and you should type them also)

Step 2: **DIR**

(A list with folder names will show up, you will see your user name – remember it for the next step)

Step 3: **CD "XXX\Local Settings\Application Data\VS Revo Group\Revo Uninstaller Pro\RegBackup\Daily\"**

(You should replace XXX with the user name you saw in the previous step, the above command contains quotation marks and you should type them also)

OR

Step 3: **CD "XXX\Local Settings\Application Data\VS Revo Group\Revo Uninstaller Pro\RegBackup>Last\"**

There are two folders with Full Registry Backup! First folder is named **Daily** because it is created once a day – once each day when Revo Uninstaller Pro is started! Second full registry backup is created on each uninstall of a program. If you are sure that you want to restore full registry backup created before uninstalling of a program then use second option for Step 3 – **Last**.

For example in the following scenario:

1. Run Revo Uninstaller Pro for the first time for that day – **Daily** full registry backup is created
2. Uninstall a program – **Last** full registry backup is created
3. Uninstall second program – **Last** full registry backup is overwritten
4. Uninstall third program – **Last** full registry backup is overwritten

The **Daily** backup will revert all changes as no program has been uninstalled. The **Last** backup will revert only the last changes made by uninstalling the last program.

Step 4: **BATCH Restore.dat**

Press ENTER after each step!

Step 5: *Remove any Windows CD/DVD and restart your PC*